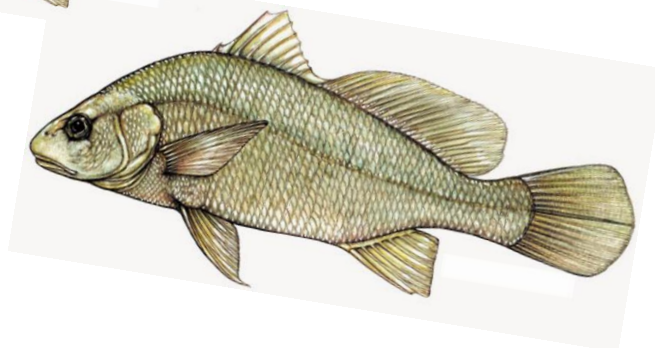
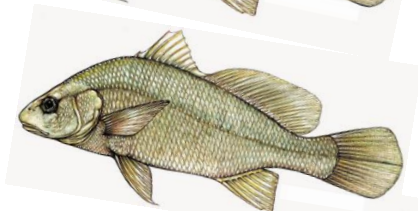
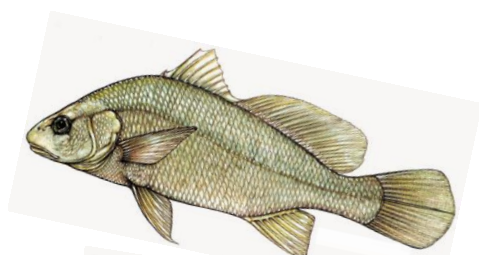




Inside.....

- ✓ International Trade Schedule Exhibitions & Events in Sri Lanka
- ✓ EDB Exporters' Forums provide relief to businesses
- ✓ Live, Fresh, Chilled Fish & Seafood- Price report
- ✓ International Trade Exhibitions Conferences, Fairs, and B2B Meetings



CONTENTS

- ✓ International Trade Schedule Exhibitions & Events in Sri Lanka 1-4

- ✓ EDB Exporters' Forums provide relief to businesses 5-7

- ✓ Live, Fresh, Chilled Fish & Seafood -Price report 8-11

- ✓ International Trade Schedule Conferences, Fairs, and B2B Exhibitions 12-17

THE LARGEST MULTITRADE EXHIBITION IN THE NORTH

YOUR GATEWAY TO THE NORTH

11TH JAFFNA INTERNATIONAL TRADE FAIR 2020

RESERVE YOUR STALLS NOW

Imalka +94 71 7488107 | imalka@saexhibitions.com

f jitf.lk | www.jitf.lk

24th – 26th January 2020
Municipal Grounds – Jaffna



- AUTOMOBILE INDUSTRY
- FINANCIAL SERVICE
- CONSTRUCTION INDUSTRY
- CONSUMER GOODS
- APPAREL INDUSTRY
- HOSPITALITY INDUSTRY
- AGRICULTURE INDUSTRY
- TRAVEL & TOURISM INDUSTRY
- ICT INDUSTRY, EDUCATION
- FINANCIAL SERVICE INSTITUTIONS
- FOOD, BEVERAGE, PACKAGING INDUSTRY & MANY MORE ...

<http://www.nce.lk/event/jaffna-international-trade-fair/>



ORGANIZED BY

LECS
LANKA EXHIBITION
& CONVENT SERVICES (PVT) LIMITED

IN ASSOCIATION WITH

CONFEDERATION AND MEMBERSHIP OF
CCIV
SOUTH ASIAN COUNCIL OF
INDUSTRIAL VENTURES



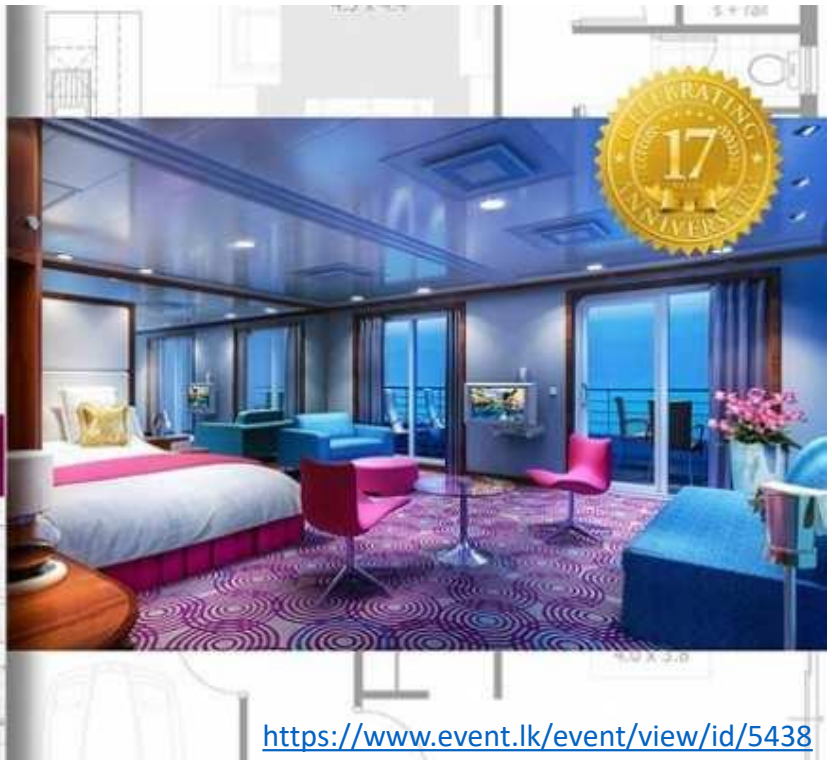
MOST
EXCLUSIVE
HOME & CONSTRUCTION
EXHIBITION
In SRI LANKA

2019
සැලසුම

Living In Style
EXHIBITION

OCTOBER

18 19 20
BMICH



<https://www.event.lk/event/view/id/5438>



LANKALIVESTOCK '19
SRI LANKA'S NO.1 FEED & LIVESTOCK INDUSTRY SHOW

SRI LANKA'S NO.1 IN'L
FEED & LIVESTOCK
PRODUCTION EXHIBITION

24-26 OCT
2019
SLECC, COLOMBO, SRI LANKA

<http://www.lankalivestock.com/>

LANKALIVESTOCK 2019 - Sri Lanka's No.1 International Feed & Livestock Production Exhibition is returning with new dates, 24 – 26 October 2019 at the Sri Lanka Exhibition & Convention Centre (SLECC) in Colombo.



Yarns • Apparel Fabrics • Denims • Accessories
Powerhouse of Opportunities

13 | 14 | 15
NOVEMBER, 2019
BMICH, Colombo
Sri Lanka

THE BIGGEST INTERNATIONAL TEXTILES
SOURCING SHOW OF SOUTH ASIA

www.intexfair.com



SRI LANKA

13 | 14 | 15 NOVEMBER, 2019
BMICH, Colombo

BANGLADESH

17 | 18 NOVEMBER, 2019
Pan Pacific Sonargaon, Dhaka

INDIA

18 | 19 | 20 JUNE 2020
BEC, Mumbai

Sustainable Energy & Lighting Solutions Expo 2019

Supported by
Ministry of Power & Renewable Energy
SRI LANKA SUSTAINABLE ENERGY AUTHORITY

Hurry Up!! Book Your Stall Today!

GO green GO SOLAR

November 2019
08 | 09 | 10
@ Nugasewana Hall
BMICH
9.30 a.m to 8.00 p.m

<https://10times.com/sustainable-energy-expo-a>

Sustainable Energy Expo will provide a safe, high quality, sustainable and eco-friendly built environment. This will provide a great potential to stimulate economic growth had not been properly harnessed and also focuses on issues affecting the construction industry and is committed to protecting and promoting the construction sector.

21st EDITION SINCE 1981

THE PREMIER INTERNATIONAL PACKAGING, PROCESSING,
PRINTING & PLASTIC EXHIBITION IN SRI LANKA

BOOK YOUR
STALL **NOW!**



LANKAPAK 2019

11th, 12th, 13th
SEPTEMBER 2019

BMICH - COLOMBO

<http://www.lankapak.com/>

HOTLINE : 076 8255587

PRINTING
POLYGRAPHY ANIMATION PRINTERS
LAYER SELECTION COLOR
DIGITAL DIE CUTTING
PRECISION MODELING
INK SYSTEMS
PLATE MAKING

POST-PRESS INK
MULTI-FORMAT
WIDE AND NARROW
PUBLISHING PRODUCTION
3D PRINTING

ADVERTISING
WHOLESALE
EXTRACTION
UHT TREATMENT
EXTRUSION
DRAINING
BLENDING
FOOD BAKING
UHT MIXING
CARBONIZATION
FILTRATION
STANDARDIZATION
DISSOLVING
BUFFERING
HARDENING
FREEZING
MEMBRANE
CANNING GRINDER

PROCESSING
WHEY
EXTRACTION
UHT TREATMENT
EXTRUSION
DRAINING
BLENDING
FOOD BAKING
UHT MIXING
CARBONIZATION
FILTRATION
STANDARDIZATION
DISSOLVING
BUFFERING
HARDENING
FREEZING
MEMBRANE
CANNING GRINDER

PACKAGING
GLOBAL PACKAGING
QUALITY PLASTIC
PACKAGING
AUXILIARY
EQUIPMENT
TECHNOLOGY
PLASTIC
LABELLING

ADHESIVES
GLOBAL PACKAGING
QUALITY PLASTIC
PACKAGING
AUXILIARY
EQUIPMENT
TECHNOLOGY
PLASTIC
LABELLING

REINFORCED PLASTICS
INFRASTRUCTURE
AGRICULTURE
FITTINGS / TANKS

PLASTIC
REINFORCED PLASTICS
INFRASTRUCTURE
AGRICULTURE
FITTINGS / TANKS

RAW MATERIALS
GLASS
POP
POS
CORRUGATED BOX
PACKAGING INDUSTRY

PACKAGING
GLOBAL PACKAGING
QUALITY PLASTIC
PACKAGING
AUXILIARY
EQUIPMENT
TECHNOLOGY
PLASTIC
LABELLING

ADHESIVES
GLOBAL PACKAGING
QUALITY PLASTIC
PACKAGING
AUXILIARY
EQUIPMENT
TECHNOLOGY
PLASTIC
LABELLING

REINFORCED PLASTICS
INFRASTRUCTURE
AGRICULTURE
FITTINGS / TANKS

PLASTIC
REINFORCED PLASTICS
INFRASTRUCTURE
AGRICULTURE
FITTINGS / TANKS

RAW MATERIALS
GLASS
POP
POS
CORRUGATED BOX
PACKAGING INDUSTRY

ORGANIZED BY



ENDORSED & SUPPORTED BY



EVENT PARTNER - INDIA



EDB Exporters' Forums provide relief to businesses

The Sri Lanka Export Development Board (EDB) has been conducting the Exporters' Forum since its inception from the late '70s. The EDB has identified the need of a common platform to discuss and resolve the issues faced by the exporter community in Sri Lanka in order to facilitate exporters to overcome constraints arising from policy and operational issues created by various institutes that regulate, operate, and facilitate cross border trade.

The EDB as the nation's prime institute to facilitate export development created this mechanism to enable exporters to submit their issues to the highest levels of state institutions that cannot be reached easily by a trader. The unique feature of the Exporters' Forum is the participation of the private sector and the public sector to resolve issues, with the political leadership represented by the relevant minister together with direct ministry-level interventions providing solutions to address those issues.

Operational issues faced by the exporters generally take less time to resolve, while policy-related issues usually take time as changing government policies has to go through a standard process. The issues of exporters can be resolved more expeditiously with the assistance of the other relevant agencies. The Exporters' Forum is conducted once every two months and 10-15 issues are taken up for discussion during the forum.



Most of the problems faced by exporters cannot be solved by one institution alone and requires a joint effort of several institutions. During the forum, exporters are able to find solutions to their trade-related issues from public sector institutions.

The forum runs with full attendance from the private sector, exporters, chambers, associations and senior officials of the ministries and departments. The general consensus among the exporter community is that the forum results in a productive exchange of ideas between the private sector and the policy makers of the government which is immensely useful in addressing trade obstacles.

Exporters' Forums so far in the year 2019, have taken up 40 issues and 14 of them have been resolved completely while the rest is under the process of being resolved, and most of them are policy-related issues. The effectiveness of the Exporters' Forum has been acknowledged by the exporters who were able to get their issues resolved.

“As an exporter, we greatly appreciate the EDB’s provision of an open platform to engage with authorities in order to understand and address our problems. The swift resolution of these issues by the EDB is inspiring and admirable” – (Basilur Tea Export Ltd. – 12.03.2019).



“First of all, we must thank you and your team at the EDB in facilitating the exporters by addressing their issues through a very effective forum in an organised way” – (Noritake Lanka Porcelain Ltd. – 02.08.2018)

“On behalf of the board of directors and the management of the company, we take this opportunity to thank your esteemed organisation for the assistance provided to us to carry out our operations without any interruptions” – (Anverally & Sons Ltd. – 29.03.2019)

“I take this opportunity to thank you, for all the assistance rendered by the EDB for us to obtain the Environmental Protection Licence” – (Sooriya Resort & Spa – 31.05.2019)

The most recent Exporters’ Forum (19th) was held on 11 June 2019, which took 11 issues up for discussion. The EDB is in the pursuit of taking efforts to provide speedy solutions for those issues. The next Exporters’ Forum will be held in the fourth week of August 2019. The EDB invites exporters and other enterprises to submit their export-related issues to the EDB to be taken up for discussion at the forum. Exporters can submit their issues by post to Director, Trade Facilitation and Trade Information Division, EDB/NDB Towers, No. 42, Nawam Mawatha, Colombo 2 and by email to (forum@edb.gov.lk) or through the dedicated online platform namely, Online Alert for Trade Obstacles (OATO <http://www.forum.edb.gov.lk/>).



Live, Fresh, Chilled Fish & Seafood

US In April, the average import price of fresh fillets was up 3% from of the previous month and down 4% from April 2018. Imports of fresh fillets were 1,818 MT at US\$ 13.7 million, lower 13% in volume and 11% in value than the previous month and 1% higher volume and 3% lower value than in April 2018. In the first four months of the year, imports totaled at 7,415 MT in quantity valued at US\$ 55 million, 4% less in volume and 8% less in value than in 2018.

FISH SPECIES TRADE NAMES	PRODUCT FORM & GRADING	INDICATIVE PRICE in US\$/KG		PRICE REFERENCE & MARKET AREA	ORIGIN
ATLANTIC SALMON	Fillet, fresh	2-3 lb/pc	5.90-6.05/lb +	Wholesale NE, USA	Europe
		3-4 lb/pc	6.00-6.15/lb +		
	Fillet, d-trim	2-3 lb/pc	4.75-4.90/lb -	Wholesale Miami, USA	Chile
		3-4 lb/pc	4.85-5.00/lb -		
4-5 lb/pc		5.00-5.15/lb -			
HALIBUT	Whole, gutted	10-20 lb/pc	7.25-7.95/lb +	fob WC, USA	USA
		20-40 lb/pc	7.65-8.25/lb +		
		> 40 lb/pc	7.85-8.60/lb +		
GROUPE <i>Epinephelus spp</i>	Whole, fresh/chilled	S\$ 8.00-8.50 -	5.88-6.25	Wholesale Singapore	Indonesia/ Malaysia
	Whole, medium		5.55 -	Wholesale, Rio de Janeiro, Brazil	Brazil
MUD GROUPE	Whole, fresh	HK\$ 132.00-171.60 +	16.88-21.94	Wholesale Hong Kong	Hong Kong
BROWN SPOTTED GROUPE <i>E. coioides</i>	Whole, fresh/chilled, small	RM 23.08 =	5.55	Wholesale Penang, Malaysia	Thailand
RED GROUPE	Whole, gutted, chilled		5.45-5.85/lb -	fob SE, USA	Central America
YELLOW CROAKER	Whole, fresh	HK\$ 35.00-165.00 +	4.48-21.10	Wholesale Hong Kong	Southeast Asia/ China
CROAKER <i>Micropogon furneri</i>	Whole	Large	1.85 -	Wholesale Sao Paolo, Brazil	Brazil
		Medium	1.35 +		
		Small	0.85 -		

FISH SPECIES TRADE NAMES	PRODUCT FORM & GRADING	INDICATIVE PRICE in US\$/KG	PRICE REFERENCE & MARKET AREA	ORIGIN
PACIFIC CROAKER <i>Cynoscion albus</i>	Whole Small Large	2.45 = 4.90 =	Wholesale Costa Rica	Costa Rica
MANGROVE SNAPPER	Whole, fresh/chilled	RM 25.46 = 6.12	Wholesale Penang, Malaysia	Thailand/ Indonesia
LANE SNAPPER <i>Lutjanus guttatus</i>	Evisc, chilled 1-2 lb/pc 2-4 lb/pc	3.45-3.75/lb - 3.75-4.25/lb =	fob SE, USA	South America
YELLOWTAIL SNAPPER <i>Lutjanus argentiventis</i>	Evisc, chilled 1-2 lb/pc 2-4 lb/pc	3.75-4.25/lb - 4.65-5.00/lb -		
SILK SNAPPER	Evisc, chilled 1-2 lb/pc 2-4 lb/pc	3.70-3.95/lb - 3.45-3.75/lb -		
RED SNAPPER <i>Lutjanus sp</i>	Whole, fresh	S\$ 8.00-8.50 + 5.88-6.25	Wholesale Jurong, Singapore	
	Whole, fresh		NQ	Brazil
	Large		NQ	
	Medium		NQ	
	Small		NQ	
SEA PERCH <i>Lateolabrax japonicus</i>	Whole, fresh	HKS 72.60-107.25 + 9.28-13.71	Wholesale Hong Kong	China/ Hong Kong
THREADFIN BREEM <i>Polynemus spp</i>	Whole, fresh/chilled, small	RM 9.63 = 2.31	Wholesale Kuala Lumpur, Malaysia	Malaysia

FISH SPECIES TRADE NAMES	PRODUCT FORM & GRADING	INDICATIVE PRICE in US\$/KG		PRICE REFERENCE & MARKET AREA	ORIGIN
DOLPHIN FISH <i>(mahi mahi)</i>	Whole		3.50 +	Wholesale Rio de Janeiro, Brazil	Brazil
	H&G, chilled (air-flown)	10-15 lb/pc 15 lb/pc and up	3.25-3.65/lb - 3.50-4.00/lb -	fob SE, USA	S. America
WHITE POMFRET	Whole, Medium Fresh/chilled	RM 33.52 =	8.06	Wholesale Kuala Lumpur, Malaysia	Thailand & Indonesia
	Whole, fresh/chilled	HK\$ 101.00-200.00 =	12.92-25.58	Wholesale Hong Kong	Local / Imported
BLACK POMFRET	Whole, Fresh/chilled	RM 20.16 =	4.85	Wholesale Penang, Malaysia	Thailand
	Whole, fresh/chilled	HK\$ 37.00-125.40 +	4.73-16.04	Wholesale Hong Kong	Hong Kong/ China
CHINESE POMFRET	Whole, fresh	HK\$ 660.00-742.00 +	84.40-94.88		
SILVER POMFRET	Whole, chilled (air-flown)	250/300 gm/pc	11.50 =	cfr Middle East	Bangladesh
		300/400 gm/pc	15.00 =		
		400/500 gm/pc	17.20 =		
		500 gm/pc and up	18.65 =		
BOMBAY DUCK	Whole, fresh	HK\$ 30.00-115.50 +	3.84-14.77	Wholesale Hong Kong	Hong Kong/ China
SCAD MACKEREL	Whole, fresh	HK\$ 50.00-135.30 +	6.39-17.30		
SPANISH MACKEREL <i>Scomberomous spp</i>	Whole, Medium fresh/chilled	RM 24.58 =	5.91	Wholesale Kuala Lumpur, Malaysia	Thailand & Indonesia
	Whole, fresh/chilled	S\$ 8.50-13.00 +	6.25-9.56	Wholesale, Singapore	Indonesia/ Malaysia
INDIAN MACKEREL <i>Rastrelliger spp</i>	Whole, fresh/chilled	RM 10.83 =	2.60	Wholesale Penang, Malaysia	Thailand & Indonesia
	Whole, fresh	S\$ 6.00-7.00 +	4.41-5.15	Wholesale Jurong, Singapore	
HAIR TAIL <i>(Ribbon Fish)</i>	Whole, fresh	HK\$ 45.00-112.20 +	5.75-14.35	Wholesale Hong Kong	Southeast Asia
HARDTAIL SCAD	Whole, fresh	RM 6.62 =	1.59	Wholesale Penang, Malaysia	Thailand

FISH SPECIES TRADE NAMES	PRODUCT FORM & GRADING	INDICATIVE PRICE In US\$/KG		PRICE REFERENCE & MARKET AREA	ORIGIN
TILAPIA	Fillet, chilled, b/l, s/l	3-5 oz/pc	3.50-3.70/lb =	Wholesale Miami, USA	Latin America
		5-7 oz/pc	3.50-3.70/lb =		
		7-9 oz/pc	3.60-3.80/lb =		
CHANNEL CATFISH	Fillet, fresh	3-5 oz/pc 5-7 oz/pc	4.50-4.60/lb = 4.50-4.60/lb =	Wholesale, NY, USA	USA
CONGER EEL	Whole, fresh	HK\$ 49.50-104.00 =	6.33-13.30	Wholesale, Hong Kong	Hong Kong/ China
BLACK TIGER SHRIMP <i>Penaeus monodon</i>	Head-on, fresh/chilled	S\$ 13.00-16.00 +	9.56-11.76	Wholesale Singapore	Indonesia/ Malaysia
WHITE SHRIMP* <i>Vannamei</i>	Head-on, fresh/chilled, Medium	RM 24.14 =	5.80	Wholesale Kuala Lumpur, Malaysia	Malaysia
	Head-on, fresh/chilled	S\$ 16.00-22.00 -	11.76-16.18	Wholesale Singapore	Indonesia/ Malaysia
LIVE FISH AND SHELLFISH					
BROWN SPOTTED GROUPE	Live	HK\$ 175-290 =	22.38-37.08	Wholesale Hong Kong	Southeast Asia
GREEN GROUPE	Live	HK\$ 75-260 =	9.59-33.25		
LEOPARD CORAL GROUPE	Live	HK\$ 360-743 +	46.04-95.01		
BROWN MARBLED GROUPE	Live	HK\$ 170-365 =	21.74-46.68		
RED GROUPE	Live	HK\$ 1155-1320 =	147.70-168.80		
MANGROVE SNAPPER		HK\$ 50-130 +	6.39-16.62		
MALABAR RED SNAPPER	Live	HK\$ 59-130 =	7.54-16.62		
RUSELL SNAPPER		HK\$ 91-140 =	11.64-17.90		
POMPANO	Live	HK\$ 53-100 -	6.78-12.79		Hong Kong
AMERICAN LOBSTER	Live	1 lb/pc 1 1/8 lb/pc 1 1/4 lb/pc 1 1/2 lb/pc	6.45-7.15/lb - 6.45-7.15/lb - 6.45-7.15/lb - 7.10-7.60/lb -	fob New York, USA	USA
LOBSTER <i>Panulirus sp</i>	Live	HK\$ 360-908 =	46.04-116.11	Wholesale Hong Kong	Southeast Asia/ Australia
SHRIMP	Live Medium	HK\$ 75-495 =	9.59-63.30	cfr Hong Kong	Southeast Asia
	Large	HK\$ 290-908 -	37.08-116.11		
THREE- SPOTTED CRAB	Live	HK\$ 80-165 -	10.23-21.10		
MANTIS SHRIMP	Live	HK\$ 90-198 -	11.51-25.32		



<https://cscmpedge.org/ehome/index.php?eventid=344812&>

The Council of Supply Chain Management Professionals (**CSCMP**) released the 30th Annual State of Logistics Report™ on June 18th, **2019** during a press conference at the National Press Club in Washington, D.C., **CSCMP** collaborates with global strategic management consulting firm A.T.



3 - 5 December 2019

Paris, France

<https://www.figlobal.com/fieurope/>



SEPTEMBER 9-12th, 2019
MELBOURNE CONVENTION
& EXHIBITION CENTRE

Fine Food Australia

09-12 Sep 2019

International Convention

Centre Sydney (ICC

Sydney), Sydney, Australia

<https://10times.com/fine-food-australia>

"The Largest Food Service, Bakery, Retail and Hospitality Trade Show in Australia"

Fine Food Australia is a trade fair for food, beverage and hospitality industry as well as one of the most important fairs of its kind in Australia. Numerous exhibitors from home and abroad will present the latest products for the industry. Visitors are buyers and decision makers from the retail, food service and hospitality. For them, the fair is an excellent opportunity to inform themselves about the new trends in the markets and the industry.

**NOV
19-21
2019**

PUTRA WORLD TRADE CENTRE
KUALA LUMPUR, MALAYSIA

**International Wood &
Woodworking Machinery Event**

<http://www.malaysianwoodexpo.com.my/>

**6th
OMANPLAST 2020**

**6th International Plastics, Rubber, Petrochemicals,
Chemicals, Fertilizers, Plastics Recycling, Printing and
Packaging Industry Exhibition & Conference 2020**

23rd to 25th March 2020

Oman Convention & Exhibition Centre, Muscat, Sultanate of Oman

Organised by:

 Silver Star Corporation L.L.C.
MUSCAT

www.omanplast.net
 E-mail: info@omanplast.net
 Tel.: +968 24788804

Venue:

 OMAN CONVENTION & EXHIBITION CENTRE
 مركز عُمان للمؤتمرات والمعارض
www.omanconvention.com

THE LEADING NAME IN OMAN FOR EXHIBITIONS



Seafood Expo

GLOBAL

Seafood Expo Global 2020

The World's Largest Seafood Trade Event

Date: 4/21/2020 - 4/23/2020

Venue: Brussels Expo, Brussels, Belgium

<https://www.showsbee.com/fairs/63016-Seafood-Expo-Global-2020.html>



ASIA RUBBER EXPO 2020 **RubberTech**
India 2020

January 8-10, 2020

Chennai Trade Centre, Chennai, India.

ORGANISED BY:



CURC AAKAR EXHIBITIONS LLP

<http://asiarubberexpo.com/>



WORLD TEA & COFFEE EXPO
21 - 23 November 2019
MUMBAI, INDIA

WOFlavours/FRLD TEA & COFFEE EXPO annually at MUMBAI IS India's ONLY International Trade Fair focused on the Tea, Coffee & Allied Sectors featuring Tea & Coffee Brands/Products, Machineries, Innovative Technologies, Vending Solutions, Packaging, ragrances/Ingredients, Certifications, Boards etc.

<https://www.worldteacoffeexpo.com/>



NEW VENUE
MALACCA
NEW VENUE



LIVESTOCK
MALAYSIA 2020

7-9 APRIL 2020
MELAKA INTERNATIONAL TRADE CENTRE, MALACCA

Malaysian International
Feed, Livestock & Meat
Industry Show

<https://www.livestockmalaysia.com/>



电子商务包装&供应链展览会

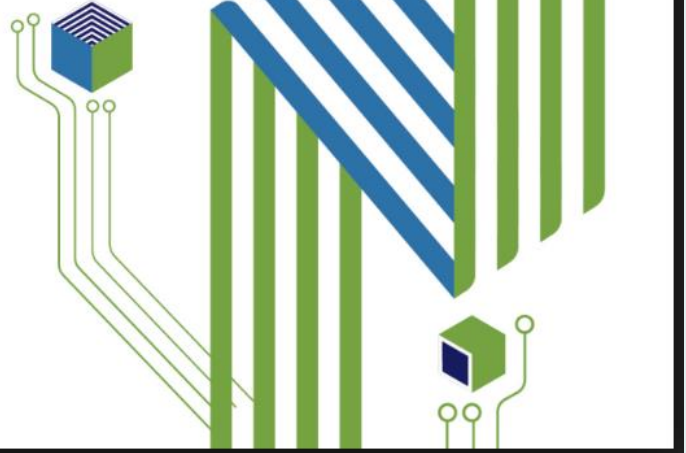
E-COMMERCE PACKAGING & SUPPLY CHAIN EXPO

2019
8/21-23

国家会展中心·上海

National Exhibition and
Convention Center · Shanghai

www.ecpaklog.com



CPAKLOG is a first and worldwide trade fair focusing on e-commerce packaging and supply chain, which debuted in 2017 in Shanghai by M. Success Media Group and ChinaPak Exhibition Services Co., Ltd. ECPAKLOG provides solutions and future trends that help E-commerce continue to grow profitably from the packaging and supply chain sectors. Topics covered include: efficiency improvements - e-commerce automatic packaging, sustainability - eco-friendly packaging and recycling, humanized packaging-Easy-to-open, ready-to-ship, frustration-free, data collection and marketing- IoT smart packaging etc.

CERTIFICATE COURSE ON IMPORT-EXPORT PROCEDURES (152ND BATCH)

FOR WHOM...

JUNIOR MANAGERS IN SHIPPING, CLEARING, FORWARDING,
CUSTOMS HOUSE AGENTS, EMERGING EXPORTERS.

COURSE CONTENTS

- Introduction to Export Procedures & Certification
- Introduction to Import Procedures
- Customs Import, Export, Bonds Procedures & Documentation
- Port Procedures & Documentation
- Air Cargo Procedures
- BOI Procedures
- Banking Procedures in related to International Trade
- Freight Forwarding & Transportation
- Quality Controls on Export & Import
- Cargo Insurance
- Other requirements in International Trade
- FIELD VISITS : Sri Lanka Customs
: Sri Lanka Port Authority (JCT & Harbour)
: Sri Lankan Cargo, Bandaranayke International Airport.

VENUE	: Sri Lanka Export Development Board, No.42, Navam Mawatha, Colombo 02
FACULTY	: Professionals from Sri Lanka Customs, Sri Lanka Ports Authority, Banks, EDB and relevant professional institutions
DURATION	: 07 Saturdays (9.00 am to 2.30 pm) and Field Visits (8.00 am to 6.30 pm) during a weekday
REGISTRATION	: Number of students per course/batch will be limited to 40 on "First come First serve" basis, and additional applications will be considered for the next batch on availability of seats
COURSE FEE	: Rs. 20,000/- per participant
DATE OF COMMENCEMENT	: 10 th August 2019

APPLICATION FORM & for further Details:

visit our website : www.srilankabusiness.com/edb/training-programs.html

or Please contact :

Trade Facilitation & Trade Information Division
Sri Lanka Export Development Board
Tel: 011 230 0678, 230 0705-11 (Ext 318)
Fax: 011 230 0676 E-mail: ramya@edb.gov.lk

Application should be sent to :

Director
Trade Facilitation & Trade Information Division
Sri Lanka Export Development Board
42, Navam Mawatha, Colombo 02



CHAIRPERSON & CHIEF EXECUTIVE
Sri Lanka Export Development Board



Ministry of Development Strategies
and International Trade

New Arrivals

EDB

Trade Information Service

NAME OF THE PUBLICATION	VOLUME		PERIOD
INDUSTRIAL PRODUCTS MAGAZINS			
Wood Carving	Volume 169		July-August 2019
Harvard Business Review	Issue 04	Volume 97	July-August 2019
DAIRY INDUSTRIES	Volume 84	No.06	Jun-19
JNA	ISSU #415		May/jun-2019
Jewelry Artist	Volume 73	No.04	July-August 2019
Pearl Report	2019		
AGRICULTURAL PRODUCTS MAGAZINS			
Tea & Coffee Trade Journal	Vol.191	No.06	Jun-19
European Price Report		ISSUE 5/2019	May-19
INFOFISH Trade News	ISSN0127-9114	No:8/2019	May-19
INFOFISH Trade News	ISSN00127-9114	No:10/2019	Jun-19
INFOFISH Trade News	ISSN00127-9114	No:11/2019	Jun-19
Fieo News		No.06	Jun-19
OTHER MAGAZINS			
TIME	Volume 149	Number 02	July 08 ,2019
TIME	Volume 194	Number 03	July 22 ,2019
TIME			
FORTUNE	Volume 180	Number 01	Jul-19
The Economist	Volume 431	Number 9149	June-29st- july 15th
The Economist			
The Economist			
The Economist			
CASA Weekly	No:20	Vol - 20	May-18
Fieo News	NO.05	Vol -xxxix	May-19

Contact: H.A.R.S Rajapaksha
Tel:+9411 230 0705/11 EXT: 321
Fax: +9411 230 0715



ශ්‍රී ලංකා ප්‍රජාතාන්ත්‍රික සමාජවාදී ජනරජයේ ගැසට් පත්‍රය

අති විශේෂ

අංක 2118/60 - 2019 අප්‍රේල් මස 11 වැනි බ්‍රහස්පතින්දා - 2019.04.11

(රජයේ බලයට ප්‍රසිද්ධ කරන ලදී)

I වැනි කොටස: (I) වැනි ඡේදය - සාමාන්‍ය රජයේ නිවේදන

එල්.ඩී.බී. 3/2012.

1979 අංක 40 දරන ශ්‍රී ලංකා අපනයන සංවර්ධන පනත

1979 අංක 40 දරන ශ්‍රී ලංකා අපනයන සංවර්ධන පනතේ 29 වන වගන්තියේ (2) වන උපවගන්තියේ (ඇ) ඡේදය යටතේ සංවර්ධන උපාය මාර්ග හා ජාත්‍යන්තර වෙළඳ අමාත්‍යවරයා විසින් සාදනු ලබන නියෝග.

මලික් සමරවික්‍රම,
සංවර්ධන උපාය මාර්ග හා
ජාත්‍යන්තර වෙළඳ අමාත්‍ය.

2019 අප්‍රේල් මස 10 වැනි දින,
කොළඹ දී ය.

නියෝග

1985 ජුනි මස 27 වැනි දිනැති අංක 355/14 දරන අති විශේෂ ගැසට් පත්‍රයේ පළ කරන ලද, 1985, අපනයනකරුවන් ලියාපදිංචි කිරීමේ යෝජනා ක්‍රමය නියෝග, ඒ යටතේ මින් පෙර සිදු කරන ලද කිසිවකට අගතියක් නොවන පරිදි මෙයින් පරිවර්තනය කරනු ලැබේ.

04 - 1121





தீ லங்கை சனநாயக சோசலிசக் குடியரசு வர்த்தமானப் பத்திரிகை

அதி விசேஷமானது

இலங்கைச் சனநாயக சோசலிசக் குடியரசு வர்த்தமானப் பத்திரிகை அதி விசேஷமானது

ஊக 2118/60 - 2019 ஊபுலீ லக 11 லுகி லகஸ்கிநீடா - 2019.04.11

2118/60 ஆம் இலக்கம் - 2019 ஆம் ஆண்டு ஏப்பிரல் மாதம் 11 ஆந் திகதி வியாழக்கிழமை

(அரசாங்கத்தின் அதிகாரத்துடன் பிரசுரிக்கப்பட்டது)

பகுதி I : தொகுதி (I) - பொது

அரசாங்க அறிவித்தல்கள்

ச.வ.பி. 3/2012

1979 ஆம் ஆண்டின் 40 ஆம் இலக்க, இலங்கை ஏற்றுமதி அபிவிருத்திச் சட்டம்

1979 ஆம் ஆண்டின் 40 ஆம் இலக்க, இலங்கை ஏற்றுமதி அபிவிருத்திச் சட்டத்தின் 29 ஆம் பிரிவின் (2) ஆம் உட்பிரிவின் (ஈ) என்னும் பந்தியின் கீழ் அபிவிருத்தி உபாய முறைகள் மற்றும் சர்வதேச வர்த்தக அமைச்சரினால் ஆக்கப்பட்ட ஒழுங்குவிதிகள்.

மலிக் சமரவிக்ரம,
அபிவிருத்தி உபாய முறைகள் மற்றும்
சர்வதேச வர்த்தக அமைச்சர்.

கொழும்பு,
2019, ஏப்பிரல் 10.

ஒழுங்குவிதிகள்

1985 ஆம் ஆண்டு யூன் மாதம் 27 ஆந் திகதிய 355/14 ஆம் இலக்க அதிவிசேட வர்த்தமானியில் வெளியிடப்பட்ட 1985 ஆம் ஆண்டின் ஏற்றுமதியாளர்களைப் பதிவு செய்வதற்கான திட்ட ஒழுங்குவிதிகள், அதன் கீழ் முன்னர் செய்யப்பட்ட எதற்கும் பங்கமின்றி இத்தால் ஒழிக்கப்படுகின்றன.

04-1121



IA - PG 4484 — 1142 (2019/04)

இலங்கை அரசாங்க அச்சுத் திணைக்களத்திற் பதிப்பிக்கப்பெற்றது.

இவ் அதிவிசேட வர்த்தமானியை www.documents.gov.lk எனும் இணையத்தளத்திலிருந்து பதிவிறக்கம் செய்ய முடியும்.



ශ්‍රී ලංකා ප්‍රජාතාන්ත්‍රික සමාජවාදී ජනරජයේ ගැසට් පත්‍රය
අති විශේෂ
The Gazette of the Democratic Socialist Republic of Sri Lanka
EXTRAORDINARY

අංක 2118/60 - 2019 අප්‍රේල් මස 11 වැනි බ්‍රහස්පතින්දා - 2019.04.11
No. 2118/60 - THURSDAY APRIL 11, 2019

(Published by Authority)

PART I : SECTION (I) — GENERAL

Government Notifications

L.D.B. 3/2012

SRI LANKA EXPORT DEVELOPMENT ACT, No. 40 OF 1979

REGULATIONS made by the Minister of Development Strategies and International Trade under Paragraph (d) of Subsection (2) of Section 29 of the Sri Lanka Export Development Act, No. 40 of 1979.

MALIK SAMARAWICKRAMA,
Minister of Development Strategies and International Trade.

Colombo,
10th April, 2019.

Regulations

The Scheme for Registration of Exporters Regulations of 1985, published in *Gazette Extraordinary* No. 355/14 June 27, 1985 are hereby rescinded, without prejudice to anything previously done thereof under.

04 - 1121





Sri Lanka Export Development Board
No: 42, Nawam Mawatha, Colombo 02
Sri Lanka

Tel : +94 11 230 0705/11
Fax : + 9411 230 0715
E Mail : edb@edb.gov.lk

FOLLOW US



Compiled by : Nadeera Sriyakumara
Ruchira Sahan Rajapaksha-0112300705(Ext.321)
Harishna Nakundala