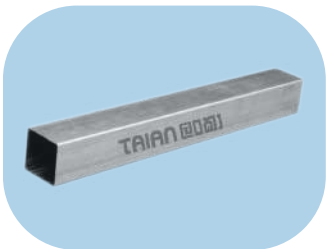
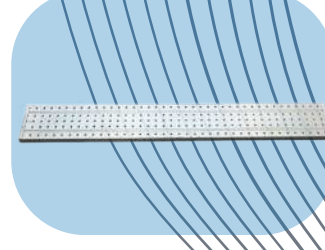
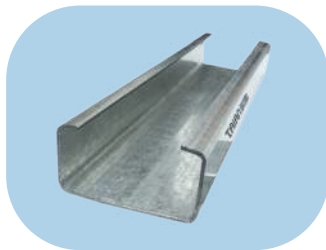


# PRODUCT CATALOG

# Our product

At Taian Lanka Steel Company, we produce premium steel products, including Pre-Galvanized Round, Square, and Rectangular tubes, C-Purlins, and Scaffoldings, all crafted to meet international standards.

We're excited to introduce our latest offerings : EGI, GI, and CR sheets, designed for durability and high performance in construction and innovation. With rigorous quality control and a network of distributors, we ensure you have access to top-quality materials for every project. Taian Lanka remains committed to excellence, innovation, and customer satisfaction.



**PRE GALVANIZED STEEL / HOT ROLLED STEEL TUBE**  
**( Q195B ) Square Tube**

SPECIFICATION - SQUARE		LENGTH 5.5 MTR																		KG PER PCS			
SIZE INCH	OD MM	PCS BDL	0.7	0.8	0.9	1	1.1	1.2	1.4	1.6	1.8	2	2.3	2.5	2.8	3	3.2	3.6	4				
1/2" x 1/2"	12.7 x 12.7	144					2.15	2.30															
5/8" x 5/8"	15 x 15	121					2.75	3.00															
3/4" x 3/4"	19 x 19	144	2.20	2.55	2.80	3.10	3.40	3.70	4.30	4.90	5.50	6.20											
1" x 1"	25 x 25	144	2.98	3.40	3.80	4.15	4.55	5.00	5.80	6.50	7.40	8.10	9.50	10.20	11.20								
1-1/4" x 1-1/4"	30 x 30	100		4.10	4.55	5.00	5.50	6.00	7.00	8.00	9.00	10.00		12.20	14.00								
1-1/2" x 1-1/2"	38 x 38	64	4.55	5.20	5.65	6.45	7.00	7.60	8.80	10.20	11.65	12.55	14.80	16.10	18.00	18.95							24.90
2" x 2"	50 x 50	36						10.20	11.90	13.50	15.30	16.70		21.00	23.10	25.00							33.20
2-1/2" x 2-1/2"	60 x 60	36						12.40	14.50	16.50	18.50	20.45		25.30	28.40								
3" x 3"	75 x 75	16							18.00	20.50	23.00	25.50		31.90	35.50	38.00							50.50
4" x 4"	100 x 100	16								27.60	31.00	34.50		42.90	48.00	51.00							68.50
5" x 5"	125 x 125	16									38.60	43.00		53.50	60.10	64.00							85.10



**PRE GALVANIZED STEEL / HOT ROLLED STEEL TUBE**  
**( Q195B ) Rectangular Tube**

SPECIFICATION - RECTANGULAR		LENGTH 5.5 MTR    KG PER PCS																	
SIZE INCH	OD mm	PCS BDL	0.7	0.8	0.9	1	1.1	1.2	1.4	1.6	1.8	2	2.3	2.5	2.8	3	3.2	3.6	4
1-1/2" x 3/4"	40 x 20	72		4.1	4.6	5.1	5.6	6.0	7.0	8.0	9.0	10.0		12.4	13.9				
1-1/2" x 1 "	40 x 25	72						6.6	7.7	8.8	9.8	10.9		13.5	15.1				
2 "x 1 "	50 x 25	72	4.5	5.2	5.7	6.4	7.0	7.5	8.8	10.2	11.4	12.6		15.6	17.5	18.7			24.5
2-1/2 "x 1-1/2"	60 x 40	40						10.2	11.9	13.6	15.3	17.0		21.0	23.5				
3" x 1 "	75 x 25	48						10.2	11.9	13.6	15.3	17.0		21.0	23.5				
3" x 1-1/2 "	75 x 38	32						11.6	13.5	15.4	17.3	19.2		23.8	26.7	28.5			37.7
3" x 2 "	75 x 50	24						12.7	14.9	17.0	19.0	21.0		26.0	29.0				
4" x 2 "	100 x 50	18							18.0	20.5	23.0	25.5		32.0	35.5	38.0			50.5
6" x 3 "	150 x 75	15									34.8	38.6		48.0	53.7	57.5			76.3
6" x 4 "	150 x 100	15									38.6	42.9		53.4	59.8	64.0			85.0





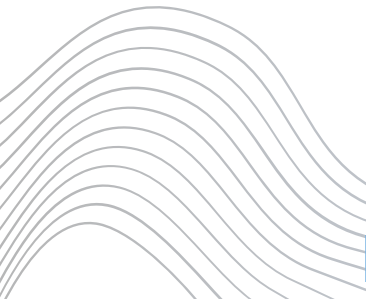
## PRE GALVANIZED STEEL ( Q195B ) Round Tube

SPECIFICATION - ROUND		LENGTH 5.5 MTR KG PER PCS							LENGTH 5.8 MTR KG PER PCS									
OD MM	PCS BDL	0.7	0.8	0.9	1	1.1	1.2	1.4	1.6	1.8	2	2.3	2.5	2.8	3	3.2	3.6	4
15 MM	180					2.15	2.30											
20 MM	169	1.87	2.10	2.40	2.55	2.95	3.20	3.55	4.30	4.85	5.30							
25 MM	127	2.35	2.70	3.05	3.35	3.70	4.00	4.68	5.60	6.30	7.00							
33 MM	91	3.20	3.65	4.00	4.55		5.25	6.20	7.20	8.30	9.30	10.60	11.50	12.80				
42 MM	61	4.10	4.55	5.00	5.50		6.65	7.80	9.30	10.70	11.70	13.30	14.50	16.30	17.45	18.50	20.60	23.20
48 MM	61	4.55	5.30	5.85	6.50	7.10	7.70	9.00	10.80	12.20	13.50	15.45	16.70	18.50	20.00	21.50	23.80	26.30
58 MM	37						9.80	11.50	13.20	14.85	16.40	18.80	20.50	23.00	24.60	26.10	29.30	32.50
75 MM	37								17.20	19.20	21.20	24.40	26.50	29.60	31.80	33.80	38.00	42.20
88 MM	24								20.20	22.50	25.10	28.70	31.30	35.10	37.30	39.80	44.70	49.60
114 MM	19								26.00	29.20	32.20	37.20	40.50	45.20	48.50	51.60	58.20	64.50
165 MM	7										47.00	54.00	58.70	65.70	70.00	75.00	84.30	94.00

## PRE GALVANIZED STEEL ( Q195B ) C-Purlin



C-PURLIN (LIPPED CHANNEL)		WEIGHT / MTR						
SIZE INCH	SIZE MM	1.40	1.60	1.80	2.00	2.30	2.50	2.80
3" X 1-1/2"	75*38*10	1.77	2.02	2.28	2.53	2.90	3.16	
3" X 1-1/2"	75*38*12	1.79	2.05	2.31	2.56	2.95	3.20	
3" X 1-1/2"	80*40*10	1.87	2.14	2.40	2.67	3.07	3.34	
3" X 1-1/2"	80*40*12	1.89	2.16	2.43	2.70	3.11	3.38	
4" X 2"	100*50*10	2.30	2.64	2.97	3.30	3.80	4.13	4.63
4" X 2"	100*50*12	2.34	2.67	3.00	3.33	3.83	4.16	4.66
4" X 2"	100*50*15	2.37	2.70	3.05	3.38	3.89	4.23	4.74
4" X 2"	100*50*20	2.42	2.77	3.11	3.45	3.97	4.32	4.83
5" X 2"	125*50*15	2.65	3.03	3.40	3.79	4.36	4.74	5.30
5" X 2"	125*50*20	2.70	3.10	3.47	3.86	4.44	4.85	5.45
5" X 2-1/2"	125*65*15	2.97	3.40	3.82	4.25	4.89	5.31	5.95
5" X 2-1/2"	125*65*20	3.03	3.45	3.88	4.33	4.96	5.40	6.05
6" X 2-1/2"	150*65*15	3.26	3.73	4.20	4.66	5.33	5.80	6.49
6" X 2-1/2"	150*65*20	3.30	3.77	4.24	4.71	5.42	5.90	6.61
7" X 3"	175*75*20		4.35	4.90	5.44	6.26	6.80	7.60
8" X 2-1/2"	200*65*20		4.40	4.95	5.50	6.33	6.88	7.70
8" X 3"	200*70*20		4.53	5.10	5.65	6.50	7.07	7.92
8" X 3"	200*75*20		4.65	5.23	5.81	6.68	7.26	8.14
10" X 3"	250*75*20		5.28	5.95	6.60	7.58	8.25	9.25
12" X 3"	300*75*20		5.91	6.65	7.38	8.49	9.25	10.35



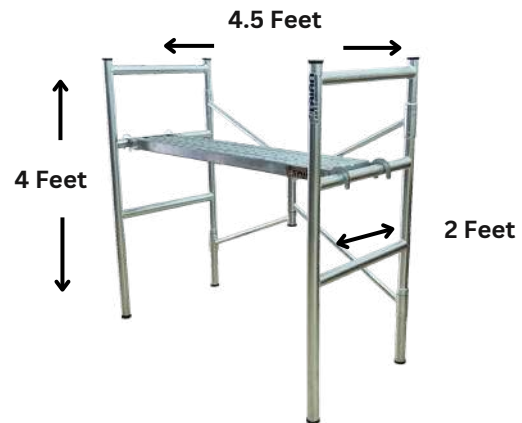
# Scaffolding Equipment



## Scaffolding Frame

TYPES	FRAME SET - 2 pcs	CROSS BARS - 2 PCS	JOINT PIN -4PCS	EACH SET
TYPE 1	1700mm* 1219mm -22.2kg (5.58 Feet)* (4Feet)	25mm*1.20mm*2198mm 6.4kg	225mm*36mm*1.6mm 1.4kg	30kg
TYPE 2	1700mm* 1219mm -27.2kg (5.58 Feet)* (4Feet)	25mm*1.20mm*2198mm 6.4kg	225mm*36mm*1.6mm 1.4kg	35kg
TYPE 3	1700mm* 1219mm -33.6kg (5.58 Feet)* (4Feet)	25mm*2mm*2198mm 10kg	225mm*33mm*1.6mm 1.4kg	45kg
TYPE 4	1700mm* 914mm -20.2kg (5.58 Feet)* (3Feet)	25mm*1.20mm*2198mm 6.4kg	225mm*36mm*1.6mm 1.4kg	28kg
TYPE 5	914mm* 1219mm -12.7kg (3 Feet)* (4Feet)	25mm*1.20mm*1981mm 5.9kg	225mm*36mm*1.6mm 1.4kg	20kg

## Foldable Scaffolding (For Domestic Use )



## Walking plank

TYPE 1	4000mm*250mm ( 4 Meters ) 14.85Kg
TYPE 2	3000mm*250mm ( 3 Meters ) 11.5Kg
TYPE 3	2000mm*250mm ( 2 Meters ) 8.55Kg



## Catwalk Plate

TYPE 1	1830mm*500mm - 14.75Kg
TYPE 2	1830mm*450mm - 12.5Kg



## Scaffolding Step Ladder

TYPE	8 Feet ( 26kg)
------	----------------

## SHEETS

INTRODUCING THE LATEST ADDITIONS TO OUR STELLAR LINEUP AT TAIAN LANKA: THE CR, EG, AND GI SHEETS. CRAFTED WITH PRECISION AND EXCELLENCE, THESE NEW ARRIVALS EMBODY OUR COMMITMENT TO DELIVERING TOP-TIER STEEL PRODUCTS TO OUR VALUED CUSTOMERS.

WHETHER YOU'RE IN NEED OF COLD ROLLED (CR) SHEETS FOR SUPERIOR STRENGTH, ELECTRO GALVANIZED (EG) SHEETS FOR ENHANCED CORROSION RESISTANCE, OR GALVANIZED IRON (GI) SHEETS FOR DURABILITY THAT LASTS, TAIAN LANKA HAS YOU COVERED.



CR SHEET



GI SHEET



EGI SHEET

### ELECTRO GALVANIZED SHEET (8\*4) (E20/E20)

THICKNESS	KG / SHEET	PS/ PALLETS
0.40mm	9.33 Kg	250 Sheets
0.50mm	11.66 Kg	220 Sheets
0.60mm	14.00 Kg	180 Sheets
0.70mm	16.33 Kg	150 Sheets
0.80mm	18.66 Kg	135 Sheets
0.90mm	21.00 Kg	100 Sheets
1.00mm	23.32 Kg	100 Sheets
1.20mm	27.99 Kg	90 Sheets
1.40mm	32.65 Kg	75 Sheets
1.50mm	34.98 Kg	70 Sheets
2.00mm	46.65 Kg	50 Sheets

## **GALVANIZED STEEL SHEET (8\*4)**

THICKNESS	KG / SHEET	PS/ PALLETS
0.40mm	9.33Kg	250 Sheets
0.50mm	11.67Kg	220 Sheets
0.60mm	14.00Kg	180 Sheets
0.70mm	16.33Kg	150 Sheets
0.80mm	18.66Kg	135 Sheets
1.00mm	23.32Kg	100 Sheets
1.20mm	27.99Kg	90 Sheets
1.40mm	32.65Kg	75 Sheets
1.50mm	34.99Kg	70 Sheets
2.00mm	46.65Kg	50 Sheets
3.00mm	70.00Kg	40 Sheets

## **COLD ROLLED SHEET (8\*4)**

THICKNESS	KG / SHEET	PS/ PALLETS
0.30mm	7.0 kg	400 Sheets
0.32mm	7.5 kg	370 Sheets
0.35mm	8.2 kg	350 Sheets
0.38mm	8.9 kg	300 Sheets
0.40mm	9.33 kg	300 Sheets
0.60mm	14.00 kg	200 Sheets
0.70mm	16.33 kg	170 Sheets
0.80mm	18.66 kg	140 Sheets
1.00mm	23.32 kg	120 Sheets
1.20mm	28.00 kg	100 Sheets
2.00mm	46.65 kg	60 Sheets



## Contact Us

Phone : +94 112332253

Fax : +94 112323419

Email : [info@taianlankasteel.com](mailto:info@taianlankasteel.com)

Address :

Head Office : 333, 1/16 Old Moor Street, Colombo-12, Srilanka.

Factory : Horana EPZ Boralugoda , Poruwadanada , Srilanka.