

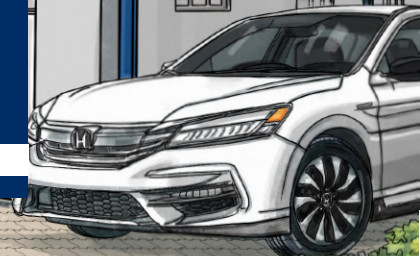


Meklet Metal Technology (Pvt) Ltd

2025

COMPANY PORTFOLIO

"Unleashing the Power of Metal, Innovating and Empowering Construction."



Copyright © 2025,

Meklet Metal Technology (Pvt) Ltd

All rights reserved. No part of this book may be reproduced in any form by any electronic or mechanical means, including information storage and retrieval system, without permission in writing from the author, except by reviewers, who may quote a brief passage in a review.



Design & Layout

Yasiru Tishan

Photography

Udula Athukorala

Printed by

Soft Wave Holdings

No: 184, Havelock Road,
Colombo 05, Sri Lanka.



Meklet Metal Technology (Pvt) Ltd



2025

COMPANY PORTFOLIO

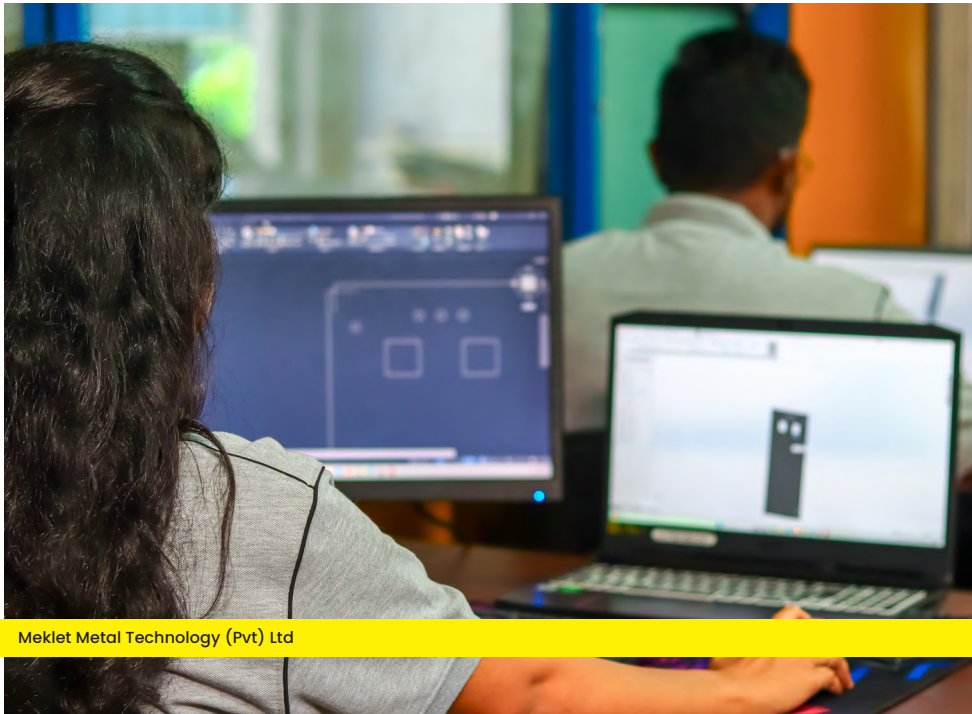
"Unleashing the Power of Metal, Innovating and Empowering Construction."

INTRODUCTION

Meklet Metal Technology (Pvt) Ltd is a premier manufacturer specializing in low-voltage power distribution panels, sub-distribution panels, cable management systems, and server rack systems for industrial and domestic applications in Sri Lanka. With in-house design and manufacturing capabilities, we offer our customers complete, customized solutions tailored to their specific needs. All our products adhere to international quality standards, ensuring reliability and performance.

Meklet is a trusted name in the industry, recognized for its reliability as a supplier of **high-quality electrical enclosures, switchboard components, and switchgears**. Our dedicated team ensures prompt customer support, professional technical guidance, competitive pricing, and timely delivery from our extensive inventory.

We recognize the importance of technological advancement and its role in driving industry growth. We are committed to integrating cutting-edge technologies and continuously improving our processes to enhance productivity and meet evolving market demands. Our focus on **innovation, research, and development** ensures that we remain at the forefront of the metal fabrication industry, providing our clients with superior products and services.





Page Of Content

Introduction	4
About Company	6
Company Statment	8
Production Standards	9
Services	10
Products	12
Material	20
Powder Coating	22
Manufacturing Plant	24

About Content

A **local manufacturing plant** specializing in **metal fabrication and high-quality metal enclosures**, equipped with advanced technology and precision engineering. Committed to innovation and excellence, it delivers durable, customizable, and industry-compliant solutions for various applications.



ABOUT COMPANY



MISSION

To excel in metal fabrication, meet construction industry needs with quality and innovation, foster entrepreneurship, and drive local employment and sector advancement.



MOTTO

Start with the customer – find out what they want and give it to them.



VISION

To become the top choice for metal fabrication nationwide, known for craftsmanship, quality, and timely service. We'll lead in technology, enhance efficiency and sustainability, prioritize customer satisfaction and employee growth, and drive industry growth and national development.



Quality Policy

Our commitment to quality is at the core of our business operations. We strive to exceed customer expectations through the meticulous execution of our activities, fostering strong relationships with our customers, external providers, collaborative business partners, regulatory bodies, and the community. We aim to achieve sustained success by managing these relationships effectively.

To ensure our organization operates efficiently, we recruit and retain highly motivated and competent individuals. We empower our team members by stimulating their full involvement and developing their abilities, competencies, and attitudes. This approach enables us to accomplish our business activities with excellence.

Our processes are structured within a **Quality Management System that meets the ISO 9001:2015 international standard requirements**. We are committed to complying with applicable statutory, legislative, and contractual requirements while conducting our business activities. Our dedication to continual improvement drives us to enhance our Quality Management System continuously.

We measure our performance in key activities through the evaluation of collected data and information. This practice allows us to make informed and effective decisions to improve our processes by managing our activities and associated resources as planned processes, we optimize performance to produce the right products at the right time with minimal waste, aiming to maximize efficiency.



MISSION

Quality: We deliver top-notch, precise metal fabrication services.

Teamwork: Our success is built on collaboration and valuing everyone's contributions.

Continuous Improvement: We embrace learning and innovation to stay ahead.

Customer Focus: We prioritize our clients' needs and build lasting relationships based on trust and satisfaction.

"Unleashing the Power of Metal, Innovating and Empowering Construction."

SLOGAN



COMPANY STATEMENT

Yasiru Tishan

Head of Department

"Let's take fabrication to the next level, where our expertise and teamwork drive innovation."

At **Meklet Metal Technology (Pvt) Ltd**, we redefine the future of metal fabrication by integrating precision engineering, innovation, and excellence. Our commitment to superior craftsmanship drives us to manufacture high-quality electrical enclosures, switchboard components, switchgear, and networking server racks that empower industries and transform construction standards.

By pushing the boundaries of metal technology, we deliver solutions that are durable, reliable, and performance-driven—ensuring safety, efficiency, and sustainability. With a relentless pursuit of perfection, we innovate, inspire, and build the foundation for tomorrow's infrastructure.

Unleashing the Power of Metal. Innovating & Empowering Construction.

PRODUCTION STANDARDS

Solution

Meklet is a Sri Lankan company specializing in the design and manufacturing of the Meklet Modular Panel System, electrical enclosures, custom-designed enclosures, 19" racks, data center solutions, cable management systems, fire cabinets, and a wide range of enclosures.

Our products are manufactured in a state-of-the-art production facility in Sri Lanka, equipped with high-tech CNC machines and fiber laser systems. Backed by years of expertise, our Research & Development team continuously innovates to deliver cutting-edge products using the latest available technologies.

With a highly skilled, well-trained, and motivated workforce, supported by a quality-driven and dedicated management team, we ensure the production of high-quality enclosures with minimal lead time and cost efficiency. Our commitment to investment, continuous R&D, and advanced manufacturing techniques positions us at the forefront of the enclosure industry, offering superior technical solutions.

Meklet products are designed and manufactured in compliance with international standards, including **IEC 61439 - 1, 2, and 3** for modular panel systems and electrical enclosures.

We fabricated from 0.8mm, 1mm, 1.2mm, 1.5mm, or 2.0mm electro-galvanized (EG) steel, ensuring superior durability. They are manufactured from electro-galvanized sheet metal with a 20g/m² zinc coating on both sides, providing excellent corrosion resistance.

All products are **pure/epoxy polyester powder-coated** using an electrostatic powder coating system to achieve the highest quality finish. For outdoor applications, we apply Zinc-Rich Primer Powder Coating, ensuring a coating thickness of 100±20 microns for enhanced protection against harsh environmental conditions.

PU self-adhesive polyurethane foam seals with seamless gaskets are fitted on doors and covers to provide the required IP protection. Through innovation, precision engineering, and adherence to global standards, Meklet continues to lead the industry with reliable, high-performance enclosure solutions.

SERVICES

Our services also include product customization to meet client-specific requirements, covering size, material, and finishing options.

We manufacture metal enclosures in any size, using materials such as zinc-coated aluminum, aluminum, galvanized sheet, stainless steel, mild steel (MS), and zinc-alum.

We provide precision edge laser cutting solutions and advanced CNC shearing services with slot punching for high-quality metal fabrication.

We offer laser welding and metal fabrication services, including bending, profiling, and formation, to ensure high-quality and precise manufacturing.

We apply powder coating using pure polyester, epoxy, and zinc-rich primer, following a chemical treatment process for enhanced durability and protection.

We specialize in designing and fabricating a wide range of products, including Free-Standing Panels, Data Server Racks, Wall-Mounting Enclosures, Metal Row Boxes, Fire Cabinets, Cable Trunking, Cable Trays, and Cable Ladders.



Meklet Metal Technology (Pvt) Ltd
No. 4475, School Ln, Pujawatta, Colombo 10220
Tel: +91 11 274 7611 / 91 75 772287
Email: info@meklet.lk, sales@meklet.lk
"Your and Our Success - We are here to help you to do things."

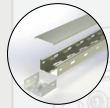
Why Choose Meklet?

At Meklet, we take pride in our expertise in custom metal fabrication and precision manufacturing. With a state-of-the-art facility and advanced machinery, we ensure that every product meets the highest industry standards. Our team of skilled professionals is dedicated to providing innovative, robust, and efficient solutions to cater to the evolving needs of the industrial and commercial sectors.



Electrical Switchboard

Offered in wall-mounted and free-standing configurations. Wall-mounted enclosures include flush-type and surface-type designs, along with row distribution enclosures. Free-standing enclosures are available with feeder pillars and multi-cubical configurations to meet diverse industrial requirements. Customizable panels and accessories for electrical distribution.



Cable Management

Cable Management Systems are crucial for all types of installations, including **electrical, telecommunication, data, BMS, ELV, fire protection**, and security systems. These systems are installed in commercial buildings, factories, hospitals, banks, hotels, and many other locations to manage cabling efficiently. We offer **Cable Trays, Cable Ladders, Cable Trunking, Floor Trunking, and related accessories**, providing a comprehensive solution for all cable installation needs.



Data Center Solution

Our data center solutions include high-quality server racks, cable management systems, and precision-engineered enclosures designed for efficient airflow, security, and scalability. We provide customized configurations to meet modern IT infrastructure demands, ensuring optimal performance, reliability, and space utilization for data centers of any size.



Fire System

Our fire system solutions include fire-rated enclosures, cabinets, and suppression systems designed for maximum safety and compliance. We manufacture custom fire protection enclosures using high-quality, heat-resistant materials, ensuring durability and reliability in critical environments.

PRODUCTS

WALL MOUNTING ENCLOSURE

Engineered for industrial, commercial, and institutional environments, our wall-mounting enclosures provide robust and secure housing for electrical components.



Manufactured from electro-galvanized sheet metal with a 25g/m² zinc coating on both sides, each unit is finished with an epoxy polyester powder coating, enhancing both durability and aesthetics. The standard RAL 7032 (Pebble Grey) textured finish adds a professional look to any setting.

Designed with precision, these enclosures seamlessly combine functionality and style, providing a reliable solution for your electrical needs.

Technical Specifications

Type	Wall Mounting Enclosure
Protection	IP-54/55 or IP-65/66
Standard	Manufactured according to IEC 61439
Main Structure	U type Formation Double L Formation Base Plate Type
Hinges	Concealed Hinge, Spring Type Hinge, U Bush Hinge- Bright Chrome or Stainless Steel
Locks & Keys	Die Cast, Polyamide, SS, CAM Lock
Accessories	Neutral Link, Earth Link, Din-Rails, MCCB & Z type adjustable benches
Doors	LHS : RHS Dual Access Door, Double Door
Gland Plate	Removable Knockout Plate

Crafted for indoor applications, these enclosures hold an IP55 rating, ensuring protection against dust ingress and water sprays from any direction, making them a durable choice for challenging conditions.

Cover plates and busbars will be mounted and included based on customer-provided drawings, ensuring a customized solution that meets specific requirements. The mounting plate options include electro-galvanized steel, zinc-aluminum coated steel, and zinc-coated sheet metal with powder coating.

TYPES OF ENCLOSURES

Throughout the manufacturing process, only high-quality raw materials and consumables are used, with strict quality control measures in place. Additionally, all products come with a one-year warranty for reliability and customer assurance.



Surface Wall Mounting Enclosures

Our wall-mounting surface enclosures come with a standard depth of 150mm, 200mm, or 250mm, while the height ranges from 200mm to 1500mm and the width from 200mm to 800mm. These dimensions can be customized upon customer request, allowing for flexibility in design and application.



Row Distribution Enclosures

Available in both surface and flush-mounted types, with configurations ranging from single-row to two, three, and four rows. Additionally, MCCBs can be included, with a standard depth of 125mm or 150mm, a height range of 200mm to 1000mm, and a width of 300mm to 600mm. Each unit comes complete with cover plates, earth studs, DIN rails, earth links.



Flush Mounting Enclosures - Sunk

Our flush-mounting enclosures are available with a standard depth of 150mm, 200mm, or 250mm, a height range of 200mm to 1500mm, and a width range of 200mm to 800mm. These enclosures are uniquely coated with RAL 9010 pure white in a gloss surface finish, ensuring a sleek and durable appearance.



Canopy Wall Mounting Enclosures

Canopy-type enclosures are designed for outdoor applications, ensuring durability and weather resistance. They are coated with a zinc-rich primer as a base layer, followed by a pure polyester top coat for enhanced protection against environmental conditions. These enclosures can be manufactured from stainless steel (SS) or other specified materials, based on customer requirements.

CABLE MANAGEMENT SYSTEM

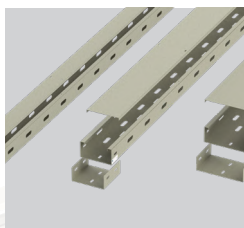
Cable Management Systems are crucial for all types of installations, including electrical, telecommunication, data, BMS, ELV, fire protection, and security systems. These systems are installed in commercial buildings, factories, hospitals, banks, hotels, and many other locations to manage cabling efficiently. Meklet offers a Cable Management System, which includes **Cable Trays, Cable Ladders, Cable Trunking, Floor Trunking**, and related accessories, providing a comprehensive solution for all cable installation needs.

Technical Specifications

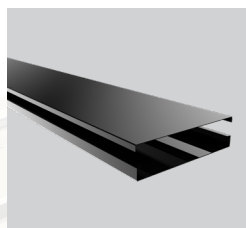
Type	Slotted Cable Tray, Cable Trunking, Cable Ladder, Floor Trunking
Protection	IP-54/55 or IP-65/66
Standard	Manufactured according to BS EN 61537
Standard Length	2440 mm - (8ft)
Standard Finishes	Pure/Epoxy Polyester Powder Coated, Primer Coating for Outdoor, Hot dip Galvanized
Material	Electro Galvanized (EG) Alu- Zinc HDGA (Alternative to HDG) Stainless Steel
Structure	0.8 – 2.0 mm Zinc Coated Sheet Steel, Al/Zn Sheet, Galvanized Sheet
Slot Size and Spacing	12mm x 35mm slot size with a spacing of 75–100mm
Joint Piece	Coupler
Bend Radius	90°
Installation Accessories	Bend, 3 Way Junction, 4 Way Junction, Outer Risers, Inner Risers, Reducers,



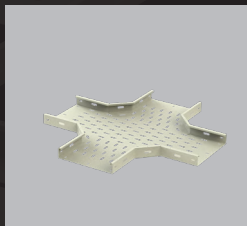
Cable Ladder



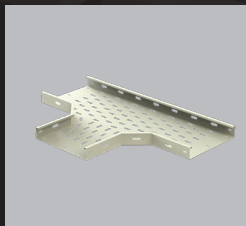
Perforated Tray



Trunking



4-Way Junction



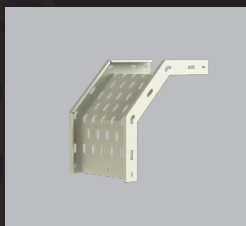
3-Way Junction



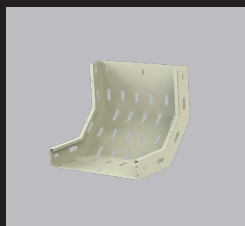
Level Offset Type



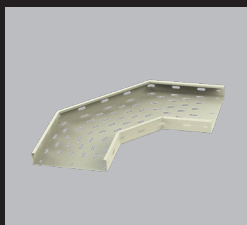
90° Elbow Riser



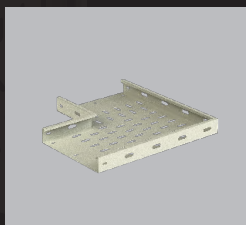
Outer Riser



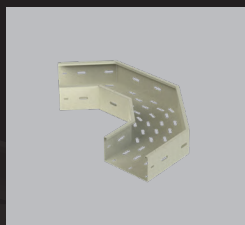
Inner Riser



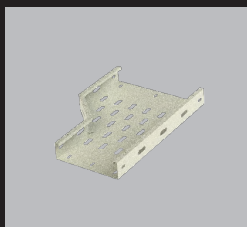
L - Bend



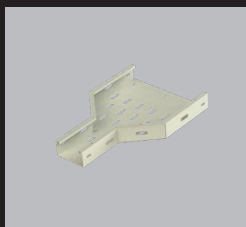
90° Elbow



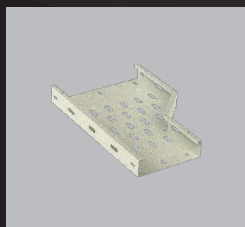
45° V Bend



Reducer Left



Reducer



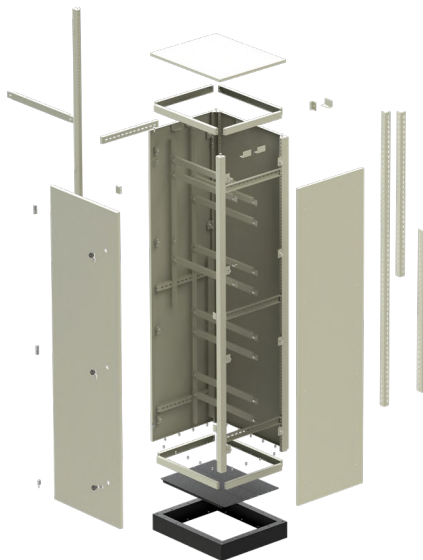
Reducer Right

FREE STANDING ENCLOSURE

Free-standing enclosures are designed for both indoor and outdoor applications, with outdoor versions available as feeder pillars featuring weather-resistant coatings and canopies for enhanced durability.

Each enclosure includes an internal modular grid, offering adjustable width, height, and depth to accommodate various accessories and mounting solutions. Standard accessories are used to segregate panels in compliance with IEC 61439-1 & 2, ensuring proper forms of separation.

The structure is built from four-fold bent 2mm profiles, capable of handling heavy switchboard loads. The Meklet Modular Panel System allows large panels to be divided into “Transport Units”, which can be easily assembled on-site to form a complete panel. These enclosures are primarily manufactured from electro-galvanized sheet metal, coated with epoxy polyester powder to provide superior protection against environmental factors.



Technical Specifications

Type	Main Distribution Board, Capacitor Banks, ATS, Motor Control Centers
Protection	IP-54/55 or IP-65/66
Standard	Manufactured according to IEC 61439
Main Structure	Manufactured using a part-to-part assembly process
Hinges	Chrome Hinge, Bright Chrome or Stainless Steel
Locks & Keys	Die Cast, Polyamide, SS, CAM Lock
Accessories	Busbar L Angle, Slotted L Angle, Mounting Crossbar, Slotted Crossbar Partition Bar
Doors	LHS : RHS Dual Access Door, Double Door
Plinth	Removable with Knock-outs
Gasket	D Type Polyurethane Foam
Cubical Separation	Control Box, Surge Box, Terminal Box & Changeover Box
Fasteners	Allen Bolt, CSK Bolt, PH Bolt



Multi Cubical

An extensive range of standard components allows for complete customization, enabling internal separation configurations from Form 1 to Form 4B, as per IEC 61439-1 & 2 standards. The Meklet range supports fixed compartment units, removable units, and fully withdrawable units, allowing for tailored panel designs that meet diverse project requirements.



Single /Double Cubical

The modular system's flexibility enables efficient panel design and rapid assembly, offering endless possibilities for electrical configurations. Various insert options, including fixed compartments, mounting plates, and switchgear arrangements, can be combined within the same assembly or section.



Capacitor Bank

A capacitor bank is a system comprising multiple capacitors housed within a free-standing enclosure, designed to enhance power efficiency and voltage stability. It can be custom-built in any size to meet specific production and application requirements.



ATS / Changeover Enclosure

An **ATS (Automatic Transfer Switch) / Changeover Enclosure** is a protective housing designed for automatic or manual power switching systems. It ensures seamless transition between power sources, enhancing reliability and efficiency in electrical distribution. Built for durability and safety, it can be customized to meet various specifications and environmental conditions.



Feeder Pillars

A floor-standing enclosure with an integrated canopy and stand is designed for outdoor applications, offering enhanced weather resistance and durability. It undergoes type testing and is coated with a zinc-rich primer for superior corrosion protection. Built to withstand harsh environments, it provides **IP-65/IP-66 water and dust protection**.

OTHER SPECIALIZED BOXES

We manufacture custom enclosures using a variety of materials, ensuring high-quality accessories and precision engineering. Each enclosure is designed and developed based on your specifications, offering durability, functionality, and superior craftsmanship to meet your exact requirements.



Stainless Steel

We offer a wide range of stainless steel (SS) boxes with a hairline finish, designed with SS housings for customized applications. Built to IP-66 standards, they feature stainless steel locks, hinges, and fasteners for superior durability and corrosion resistance. Available in both wall-mounting and floor-standing enclosures, they provide robust protection for various industrial and commercial needs.



Busbar Boxes

Busbar boxes are designed with slotted busbars and separate SM mounts, available in two types: single-phase and three-phase. They come equipped with grounding holes and include grommets for secure cable entry. The lid is fastened using high-quality fasteners, ensuring durability and easy access.



Changeover Boxes

Changeover boxes are manufactured in customized sizes, designed for seamless power switching applications. They feature a secure lid-type enclosure, ensuring protection, durability, and easy access for maintenance and operation.

Mainly design as per the customer request.



Terminal Boxes

A Terminal Box consists of a sturdy enclosure, a securely fastened lid with screws, and either rails or a mounting plate for equipment installation. Available in various sizes, they can be selected based on specific requirements. For enhanced corrosion resistance and durability, stainless steel terminal boxes are offered in AISI 304 & AISI 316 grades, with all fasteners made of stainless steel.



Isolator Box

Molded Case Circuit Breaker (MCCB) Boxes and Isolator Boxes (Miniature Circuit Breaker/MCB Boxes) are designed using epoxy polyester powder-coated electro-galvanized sheets for enhanced durability and corrosion resistance. Both MCCB and Isolator Boxes feature a sturdy enclosure (cabin) with a secure lid-type cover, ensuring protection and reliability in electrical installations.



Single Phase Meter Box

The modular system's flexibility enables efficient panel design and rapid assembly, offering endless possibilities for electrical configurations. Various insert options, including fixed compartments, mounting plates, and switchgear arrangements, can be combined within the same assembly or section.



Three Phase Meter Box

A capacitor bank is a system comprising multiple capacitors housed within a free-standing enclosure, designed to enhance power efficiency and voltage stability. It can be custom-built in any size to meet specific production and application requirements.



19" Server Rack

Wall-Mounting Racks are designed to the 19" industry standard, making them suitable for equipment rooms and office environments. They are available in RAL 7035 and RAL 9005 color options and come in various sizes ranging from 3U to 21U. Racks feature a sturdy main frame, a front glass door with a key lock, and two adjustable railings.

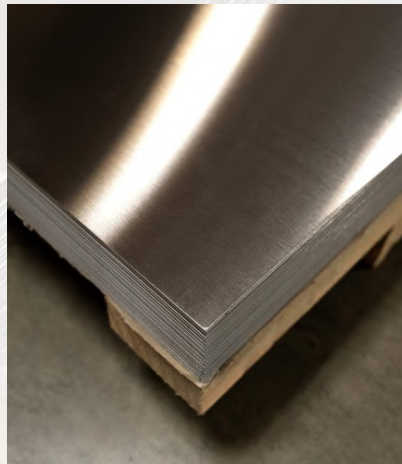
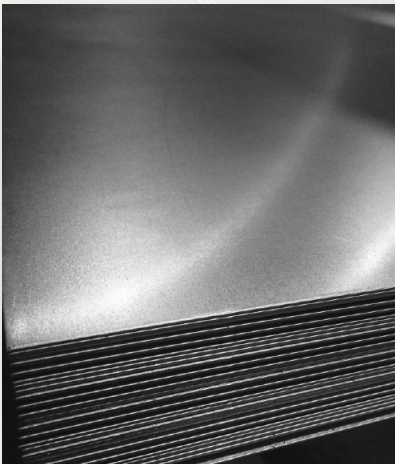
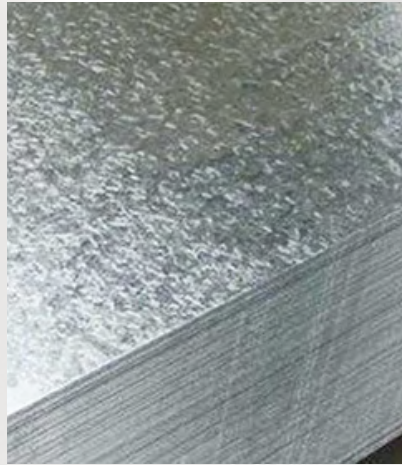
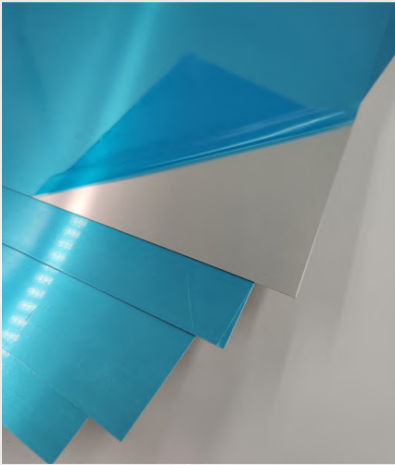


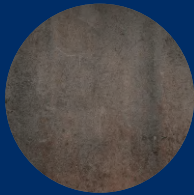
DVR Box

DVR Boxes are specifically designed for indoor use and wall-mounted installations. Standard color options include RAL 7032 and RAL 7035, ensuring a professional and sleek appearance. These boxes are specially designed to accommodate CCTV installations, providing secure housing and protection for DVR systems.

MATERIAL

We use **Electro-Galvanized Steel**, Zinc-Aluminum Coated Steel, Zinc-Coated Sheet Metal, Mild Steel, Galvanized Iron (GI), and Stainless Steel (AISI 304, AISI 316, AISI 316L), ensuring high durability and excellent corrosion resistance. Throughout the manufacturing process, only **premium raw materials** and consumables are utilized, with strict quality control measures in place to guarantee superior product performance and reliability.



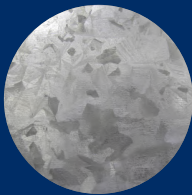


Mild Steel

Mild steel (MS) is commonly used for **hot-dip galvanizing** and offers excellent weldability and machinability, making it ideal for structural applications, enclosures, and industrial components. It is widely used in fabrication and manufacturing due to its high strength, ductility, and cost-effectiveness. We utilize mild steel in thicknesses ranging from 1mm to 6mm, with standard **plate sizes of 2440mm x 1220mm (8x4 ft)**.

Zinc Coated

Z/C Coated Mild Steel is an **electro-galvanized sheet** metal with a **20g/m² zinc coating** on both sides, ensuring enhanced corrosion resistance and durability. This material is used for all production processes and is sourced from trusted suppliers in **China, Korea, and India**. It features a matte zinc finish and falls within the mid-to-high price range, offering a balance of quality and cost-effectiveness.

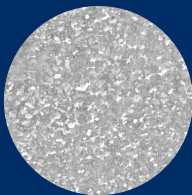
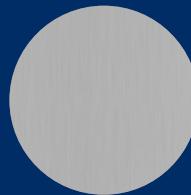


Galvanized Iron

Galvanized Iron (GI) is a zinc-coated steel known for its superior corrosion resistance, durability, and strength. The galvanization process protects the metal from rust and environmental damage, making it ideal for electrical enclosures, structural applications, and industrial fabrication. GI sheets are available in various thicknesses and finishes, ensuring versatility for different manufacturing needs.

Stainless Steel

Stainless Steel is a **high-quality material** known for its corrosion resistance, durability, and premium finish. We use **AISI 304, AISI 316, and AISI 316L** stainless steel sheets, featuring a hairline finish for a sleek appearance. Thicknesses range from **0.8mm to 2mm**, with standard plate sizes of 2440mm x 1220mm (8x4 ft), ensuring suitability for various **industrial and fabrication applications**.



Zinc Alum

Zinc-Aluminum (**Zinc Alum**) is a high-quality material known for its excellent corrosion resistance and durability. It is used for non-powder-coated applications, providing superior protection against environmental factors. The material is available in thicknesses ranging from **1.2mm, 1.5mm, to 2mm**, with standard plate sizes of 2440mm x 1220mm (8x4 ft), making it suitable for a wide range of industrial and structural applications.

POWDER COATING

COATING

The manufacturing process begins with **grinding, pre-surface cleaning**, and the application of **cataloy putty**. After this stage, the material undergoes final grinding to ensure a smooth and uniform surface.

In the powder coating process, phosphating plays a crucial role in enhancing corrosion protection and improving adhesion. At Meklet, we use a phosphate solution (**METAPHOSE 3INI**), prepared at a ratio of 1 liter per 5 liters of water. The cleaned and rinsed metal sheets are immersed in the phosphate solution, then allowed to dry before being transported to the **powder coating booth via a railing system**.

We utilize an **electrostatic powder coating system**, applying a standard **coating thickness of 80–120** microns. Once coated, the parts are moved to an industrial oven for curing, where they are subjected to a temperature of **180°C for 15 minutes** to ensure a durable and high-quality finish.

POWDER SPECIFICATIONS

Type	Technical Specifications
Powder	Pure / Epoxy Polyester Hybrid Powder
Coating Thickness	80-120 µm
Surface Finishing	Texture, Gloss, Matte
Gloss Level	Semi-Gloss 50-70% - (Smooth Finish)
Texture Pattern	Smooth Coating (60–90 µm) Texture Coating (90–130 µm) Hammer Texture (100–300 µm)
Curing Temperature	180 °C - 15 minutes
Pre-Treatment Process	Degreasing / De-Rusting / Cleaning & Process Water Cleansing & Process Phosphating
Chemical	Metaphose 3 in 1
Coating System	Electrostatic Powder Coating
Curing	LPG Powder Coating Oven
Outdoor Coating	Zinc Rich Primer

COLOUR TYPES



RAL - 7032

Chemistry: Epoxy Polyester / Pure
Colour - Pebble Grey
Surface Finish - Texture/ Gloss/ Semi Gloss



RAL - 7035

Chemistry: Epoxy Polyester / Pure
Colour - Light Grey
Surface Finish - Texture/ Gloss/ Semi Gloss



RAL - 9010

Chemistry: Epoxy Polyester / Pure
Colour - Pure White
Surface Finish - Texture/ Gloss/ Semi Gloss



RAL - 9003

Chemistry: Epoxy Polyester / Pure
Colour - Signal White
Surface Finish - Texture/ Gloss/ Semi Gloss



RAL - 9005

Chemistry: Epoxy Polyester / Pure
Colour - Jet Black
Surface Finish - Texture/ Gloss/ Matte



RAL - 7016

Chemistry: Zinc-Rich Polyester
Colour - Anthracite Grey
Surface Finish - Texture/ Gloss/ Semi Gloss



RAL - 7030

Chemistry: Epoxy Polyester / Pure
Colour - Stone Grey
Surface Finish - Texture/ Gloss/ Semi Gloss



RAL - 3000

Pure Polyester
Flame Red
Gloss



RAL - 3020

Epoxy Polyester
Traffic Red
Gloss



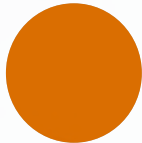
RAL - 2004

Epoxy Polyester
Pure Orange
Texture



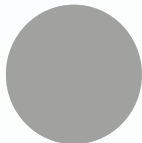
RAL - 2008

Epoxy Polyester
Bright Red Orange
Gloss



RAL - 2000

Epoxy Polyester
Yellow Orange
Gloss



RAL - 9006

Epoxy Polyester
White Aluminium
Hammer Texture



RAL - 9011

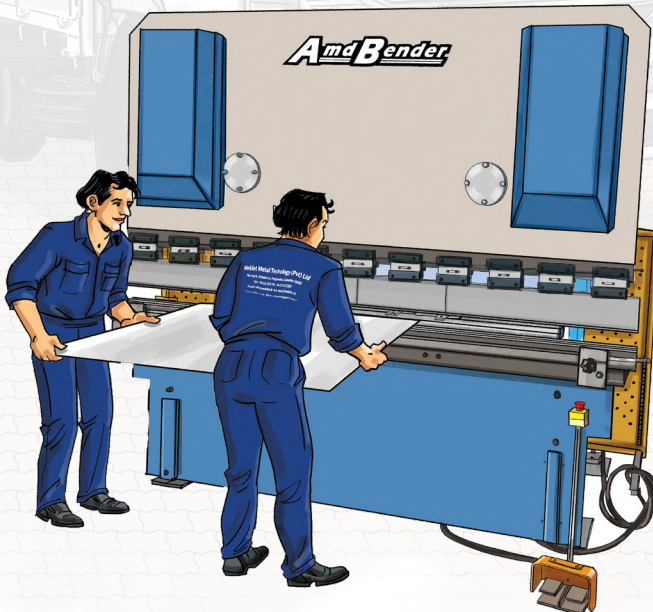
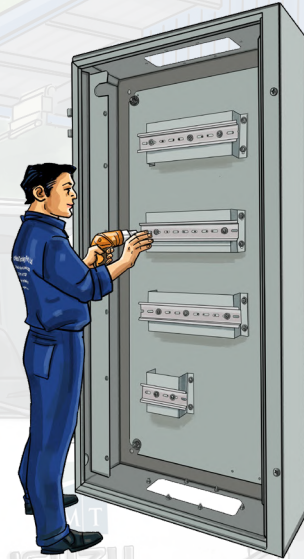
Epoxy Polyester
Graphite Black
Supper Matte

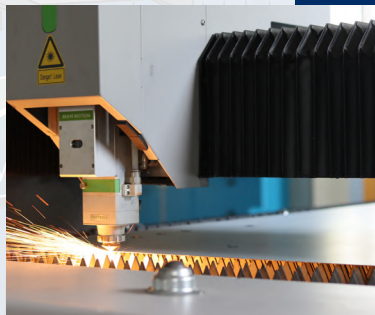
MANUFACTURING PLANT

Profit & Profit Target

Our **state-of-the-art manufacturing plant** is equipped with the latest **machinery and advanced tools**, ensuring the production of high-quality, precision-engineered products. With an efficient workflow and optimized processes, we can manufacture most items **within 2-3 days**, even in large quantities, while maintaining exceptional quality and reliability.

Our skilled and experienced team specializes in the development and design of cutting-edge products, ensuring innovative and high-quality solutions. We understand that cost is a key factor in purchasing decisions, which is why we offer competitive and reasonable pricing without compromising on quality and performance.





Laser Cutting

Our **fiber laser cutting service** offers precision cutting for mild steel (MS), stainless steel (SS), aluminum, and galvanized sheets up to 12mm thickness. Our expert design team can create custom designs, optimize nesting, and cut according to your specifications. This process ensures a smooth finish, clean cuts, and efficient production, saving both time and cost while delivering high-quality results.



Laser Welding

We utilize the latest welding technology, which enables rust removal, cleaning, precise feeding, and smooth welding without the need for surface grinding. This advanced process allows for spot welding and various other applications across all types of materials, ensuring high-quality, durable, and efficient production. By optimizing time and precision, we deliver superior craftsmanship with minimal post-processing requirements.



Bending

Our manufacturing facility is equipped with CNC bending tools capable of forming any product we manufacture with precision. The **AMD Bender**, a state-of-the-art hydraulic bending machine, features an integrated back gauge, ensuring fast and accurate production. This advanced equipment streamlines the bending process, allowing us to deliver high-quality results quickly and efficiently.



Powder Coating

In our powder coating process, we offer a wide range of colors and patterns to suit your needs, ensuring surface cleaning and optimal coating quality. We use pure polyester and epoxy polyester powders for coating, with a zinc-rich primer for enhanced corrosion resistance.



Meklet Metal Technology (Pvt) Ltd

"Let's take fabrication to the next level, where our expertise and teamwork drive innovation."



PROUDLY
MADE IN SRI LANKA

© 03-2025 Meklet™



Scan to Download
e-Catalog



No: 66/3, Weniwelkola, School Ln,
Polgasowita, Colombo 10320



+94 11 274 7951 / +94 71 786 0780
+94 75 772 2287



sales@meklet.lk / yasiru@meklet.lk
info@meklet.lk



www.meklet.lk