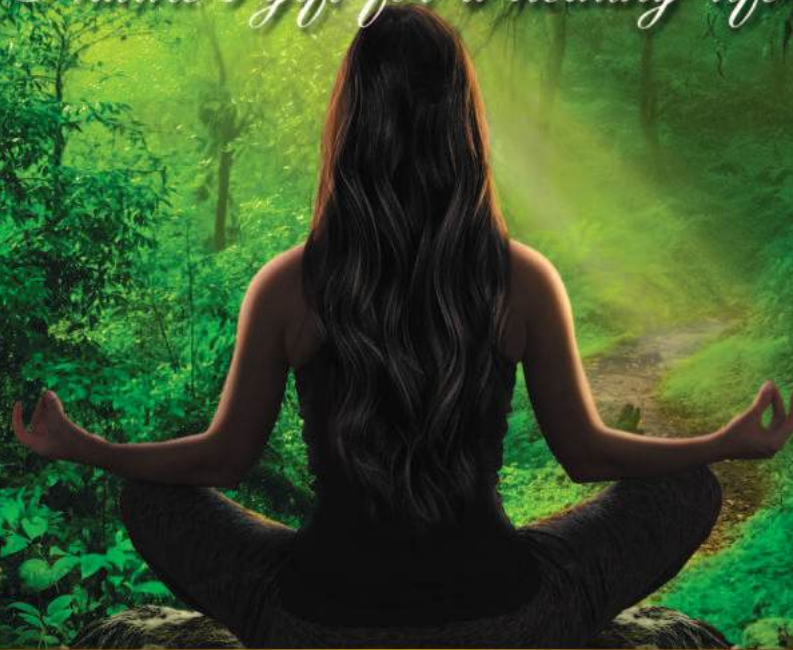




Beam Hela Osu Lanka (Pvt) Ltd.

*Nature's gift for a healthy life*



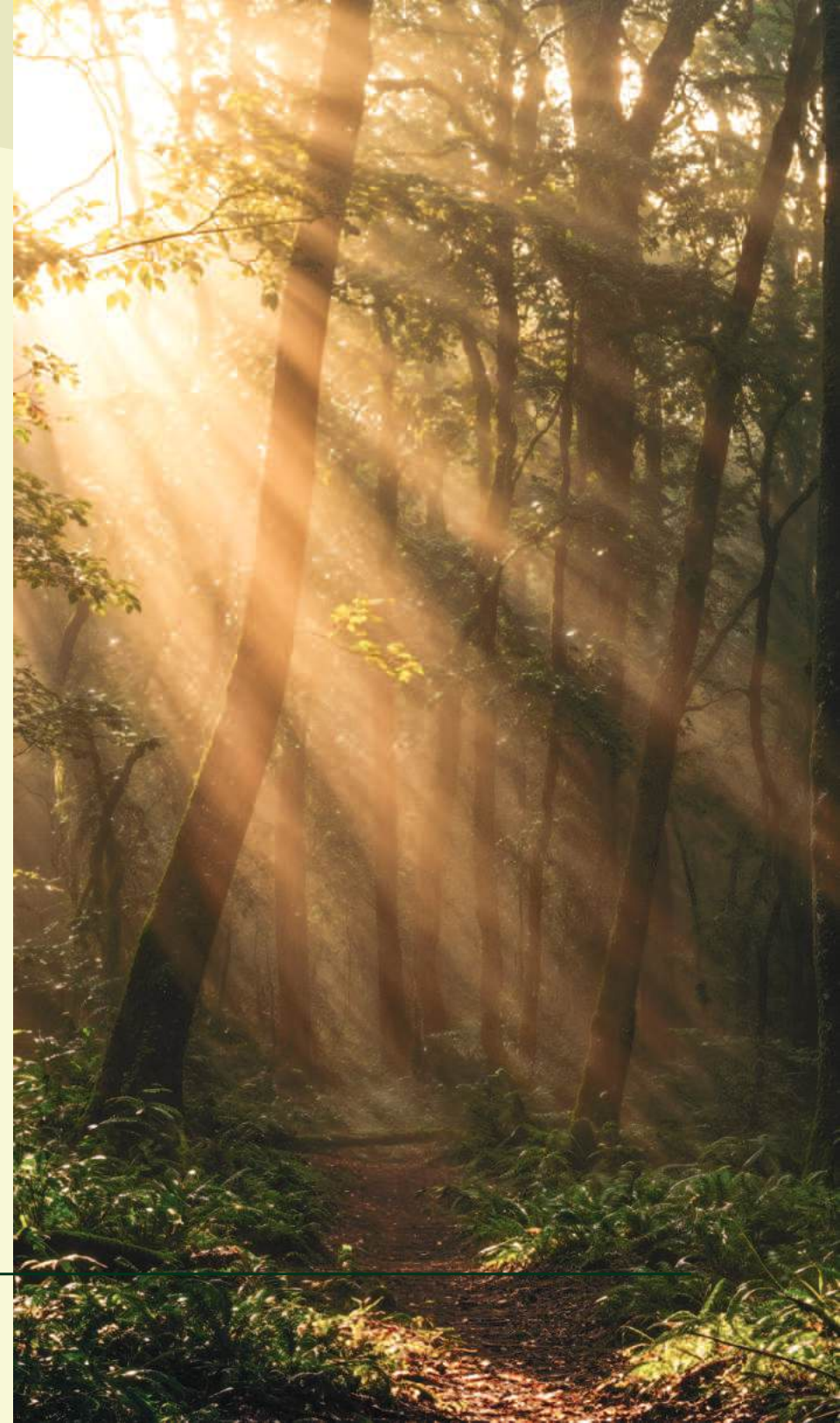
## ABOUT US

Founded in 1984 by our Chairman Dr. Bandula Rathnasiri Piyarathna (D.A.M.S.), Beam Hela Osu Lanka Pvt Ltd has been a pioneer in the Sri Lankan Ayurvedic and herbal pharmaceutical manufacturing industry for over 40 years.

With ISO and GMP certifications and a skilled workforce of 160+ employees, we maintain uncompromised quality standards across our diverse portfolio of Ayurvedic medicines and herbal wellness products.

Our offerings include Arishta, Asava, Guli, Kalka, Churna, Rasayana, herbal oils, syrups, teas, balms, and modern herbal supplements – crafted with a deep respect for Ayurveda while embracing cutting-edge production technology.

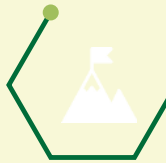
Today, Beam Hela Osu Lanka exports to markets across North America, Europe, Asia, and Oceania, becoming a trusted name in both traditional herbal remedies and modern herbal innovations.





## **Vision:**

Is to be consistent in growth, be unmatched in quality & committed to excellence.



## **Mission:**

Is striving for “Global Healthiness” through the wonders of Ayurveda, to provide high-quality products that improve people's health and wellness, and to do so in a sustainable and environmentally responsible manner.



## **Values:**

Focus on natural wellness, quality, and sustainable practices.

---



## OUR FOUNDERS



### **Dr. R.A.B. Rathnasiri Piyarathna (D.A.M.S.) – Chairman**

Beam Hela Osu Lanka began with the vision of Dr. R. A. B. R. Piyarathna, its founder and guiding force. Trained as an Ayurvedic doctor with DAM & S qualifications from the University of Colombo, he carried with him not just deep traditional knowledge, but more than 35 years of experience in corporate operations, quality management, research, and innovation. His journey through the world of business and Ayurveda shaped the foundation on which the company proudly stands today.



### **Dr. (Mrs.) R.V.G. Rubasingha (D.A.M.S.) – Directress**

Dr. Mrs. R. V. G. Rubasingha, the Co-founder, brings her own remarkable journey to the heart of the company. An Ayurvedic practitioner with DAM & S qualifications from the University of Colombo, she carries over 35 years of hands-on experience in healing, treating patients, and crafting natural herbal medicines. Her dedication to authentic Ayurvedic practice adds depth and wisdom to everything the company creates.

## BOARD OF DIRECTORS

**Mr. R.A.D.L. Ranathunga**

BBM (Ind.)

**Managing Director / CEO**

Mr. Dave Ranathunga obtained his degree in business management from the University of Bangalore and currently serves as the Managing Director of the company.

**Mrs. R.A.C. Lakmali Ranathunga**

Bsc (Hons),IT(UK), MBA(Ind.)

**Directress Business Development**

Mrs. R.A.C. Lakmali Ranathunga holds Bsc (Hons),IT(UK),M-BA(Ind.) and serves as directress business development and responsible for the ICT of the company.

**Mr. Janaka Weeraratne**

BSc IT Hons, MSc UK

**CIO/Director International Business  
Development**

Mr. Janaka Weeraratne holds Bsc (Hons),IT(UK),MSc.(UK) and serves as director International Business Development and also responsible for the ICT of the company.

**Dr. Mrs. Menu Rathnayake**

B.A.M.S. SL

**Directress**

Dr. Mrs. Menu Rathnayake holds B.A.M. S. (SL) and servers as a directress overlook the manufacturing process of the company.

# HEAD OFFICE & MANUFACTURING

## Sri Lanka:

Beam Hela Osu Lanka (Pvt) Ltd.  
No.456, Awissawella Road,  
Miriswatta, Puwakpitiya,  
Sri Lanka.

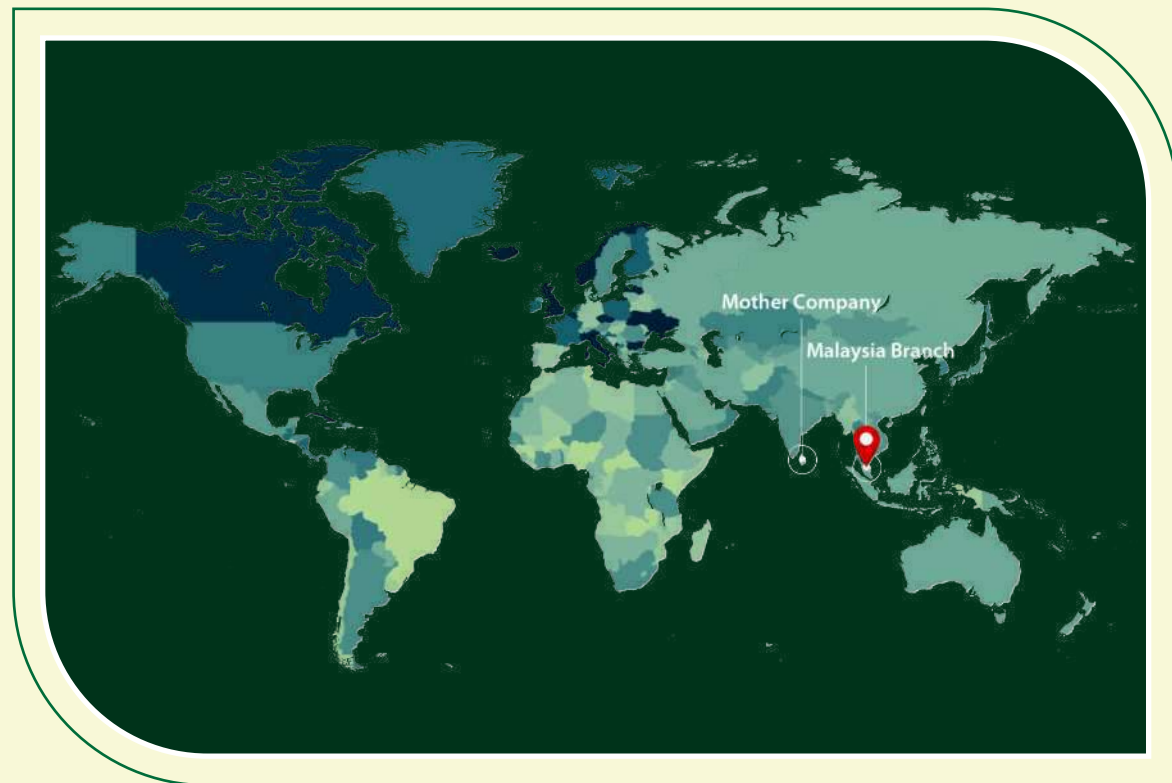
Hot Line: 94 711 699 699

Web: [www.beamhelaosulanka.lk](http://www.beamhelaosulanka.lk)

## OFFICE & DISTRIBUTION

## Malaysia:

Beam Hela Herbals Malaya Sdn. Bhd.  
32-01, Level 32,  
Tower B,  
The Vertical Corporate Towers,  
Jalan Kerinchi 8 Unit,  
59200 Kuala Lumpur  
Malaysia.



# OUR INTERNATIONAL PRESENCE

- Australia
- Canada
- Czech Republic
- Germany
- Italy
- Japan
- UK
- USA



# OUR STRENGTHS & CAPABILITIES

- Advanced manufacturing facilities with modern machinery.
- In-house R&D and laboratory testing for quality assurance.
- Sustainable raw material sourcing from certified farmer groups.
- Eco-friendly biodegradable packaging initiatives.
- Wide distribution network – both domestic and international.



# CERTIFICATIONS:

- ISO 9001:2015  
Quality Management Excellence
- ISO 14001:2015  
Environmentally Responsible Manufacturing
- ISO 22000:2018  
Global Food Safety Assurance
- HACCP  
Hazard-Controlled Food Protection
- GMP  
Safe & High-Standard Production
- HALAL



## OUR PRODUCT CATEGORIES

- COUGH
- COLD
- VITALITY BOOSTERS
- GASTRITIS
- CHOLESTEROL
- HYPERTENSION
- OBEYSITY
- DIABETES
- HERBAL TEAS & DRINKS
- ORAL CARE
- PERSONAL CARE
- HAIR CARE
- ACHES & PAINS
- SKIN DISEASES
- ARTHRITIS
- CUTS & WOUNDS



# COUGH

## Pawatta Thalsookiri Cough Relief (An Expectorant and Antispasmodic)

Pawatta Thalsookiri Syrup is a traditional Ayurvedic formulation with expectorant and antispasmodic properties, crafted to provide relief from cough, respiratory congestion, chronic bronchitis, influenza, and bronchial asthma. Its natural ingredients help soothe the respiratory system and support overall lung health.

### Recommended Dosage:

Infants: 2.5–5 ml

Children: 5–10 ml

Adults: 15–30 ml

Take three times daily before meals or as directed by a qualified healthcare professional.

### Ingredients:

Pawatta (*Justicia adhatoda*) leaves, Palm sugar (Talsookiri), Ginger (*Zingiber officinale*) and Sugar.

Product Registered at the Ministry of Health, Malaysia

Product Registered by Department of Ayurveda, Sri Lanka.

ISO 9001:2015, ISO 14001:2015, ISO 22000, HACCP, GMP & HALAL Certified.



# COUGH

## Thulasi Cough Syrup (Relief for Chronic and Dry Cough)

Thulasi Cough Syrup is a traditional Ayurvedic formulation with expectorant and antispasmodic properties, specifically designed to provide relief from chronic and dry coughs, bronchial asthma, and catarrh. It is especially effective for soothing nighttime coughs, promoting restful sleep and respiratory comfort.

### Recommended Dosage:

Infants: 2.5–5 ml

Children: 5–10 ml

Adults: 15–30 ml

Take three times daily before meals or as directed by a qualified healthcare professional.

### Ingredients:

Holy Basil/Thulasi (*Ocimum tenuiflorum*), Licourice/ Welmee (*Glycyrahiza glabra*), Pawatta (*Justicia adhatoda*), Wild eggplant (*Solanum virginianum*), Suwanda Kottan (*Terminalia catappa*), Siritekku (*Clerodendrum indicum*), Ginger (*Zingiber officinale*) and Karkataka Sringi.

Product Registered by Department of Ayurveda, Sri Lanka.  
ISO 9001:2015, ISO 14001:2015, ISO 22000, HACCP, GMP & HALAL Certified.



# COUGH

## Kapparawalliya Syrup (Relief for Whooping Cough)

Kapparawalliya Syrup is a traditional herbal formulation designed to provide relief from chronic cough, bronchial asthma, catarrh infections in children, and whooping cough. Its natural ingredients help soothe the respiratory tract and support overall respiratory health.

### Recommended Dosage:

Infants: 2.5–5 ml

Children: 5–10 ml

Adults: 15–30 ml

Take three times daily before meals or as directed by a qualified healthcare professional.

### Ingredients:

Whole parts of the Kapparawalliya Plant (*Plectranthus amboinicus* (Lour.) Spreng, Sugar.

Product Registered by Department of Ayurveda, Sri Lanka.  
ISO 9001:2015, ISO 14001:2015, ISO 22000, HACCP, GMP & HALAL Certified.



BEAM HELA OSU LANKA (PVT) LTD.  
Ayu.Com. Reg. No: 6/2/1/01/03

# COUGH

## Valmee Syrup (Athimadura Syrup) (Relief from Acute and Chronic Cough)

Valmee Syrup is a traditional Ayurvedic remedy formulated to provide relief from acute and chronic cough, bronchial asthma, and other respiratory system disorders. Its herbal composition helps soothe the respiratory tract and support overall lung health.

### Recommended Dosage:

Infants: 2.5–5 ml

Ages 3–6: 5–10 ml

Ages 6–12: 10–15 ml

Adults: 15–30 ml

Take three times daily before meals or as directed by a qualified healthcare professional.

### Ingredients:

Liquorice/ Welmee (*Glycyrahiza glabra*) and sugar

Product Registered by Department of Ayurveda, Sri Lanka.  
ISO 9001:2015, ISO 14001:2015, ISO 22000, HACCP, GMP & HALAL Certified.



# COLD

## Sudarshana Suspension (Clinically Proven Antipyretic and Anti-Inflammatory)

Sudarshana Suspension is a trusted Ayurvedic formulation designed to boost immunity and support the body in defending against viral and bacterial infections. It offers a wide range of benefits, including antipyretic, anti-inflammatory (acute and chronic), anti-rheumatic, antihistamine, antioxidant, analgesic, and hepatoprotective properties.

### Recommended Dosage:

Infants: 2.5–5 ml

Children: 5–10 ml

Adults: 15–30 ml

Take three times daily before meals or as directed by a qualified healthcare professional.

### Ingredients:

Sri Lankan Bee's Honey and authentic 53 Ayurvedic herbs. Kiratha (*Andrographis paniculata*), Long pepper (*Piper longum*), Ginger (*Zingiber officinale*), Pepper (*Piper nigrum*), Arualu (*Terminalia chebula*), Bedda nuts (*Terminalia bellirica*), Indian gooseberry (*Phyllanthus emblica*), Liquorice (*Glycyrrhiza glabra*), Nutmeg (*Myristica fragrans*), Clove (*Syzygium aromaticum*), Cinnamon (*Cinnamomum zeylanicum*), Wild eggplant (*Solanum xanthocarpum*), Calumba wood/Venivel (*Coscinium fenestratum*), Turmeric (*Curcuma longa*), Ashwagandha (*Withania somnifera*) etc.

Product Registered at the Ministry of Health, Malaysia.

Product Registered by Department of Ayurveda, Sri Lanka.

ISO 9001:2015, ISO 14001:2015, ISO 22000, HACCP, GMP & HALAL Certified.



BEAM HELA OSU LANKA (PVT) LTD.

Ayu.Com. Reg. No: 6/2/1/01/03

# COLD

## Suwoda Peyawa (Relief from Sneezing, Colds and Headaches)

Suwoda Peyawa is a traditional herbal remedy formulated to provide relief from sneezing, colds, headaches, runny nose, throat irritation, and general body aches. Crafted from carefully selected herbs, it supports overall respiratory wellness and comfort.

### Preparation & Use:

Dissolve one sachet in  $\frac{3}{4}$  cup of boiling water. Let it steep for 10 minutes, strain, and enjoy warm, with or without sugar.

### Ingredients:

Dry Ginger (*Zingiber officinale*), Coriander Seeds (*Coriandrum sativum*), Pathpadagam (*Mollugo cerviana*), Long Pepper (*Piper longum*), Snap ginger/Heen araththa (*Alpinia calcarata*) etc.

Product Registered by Department of Ayurveda, Sri Lanka.  
ISO 9001:2015, ISO 14001:2015, ISO 22000, HACCP, GMP & HALAL Certified.



BEAM HELA OSU LANKA (PVT) LTD.  
Ayu.Com. Reg. No: 6/2/1/01/03

COLD

## Beam Suwa Dharani (Naturally Support and Enhance Immunity)

Beam Suwa Dharani is a traditional Ayurvedic herbal drink formulated to naturally support and enhance immunity. Crafted from time-honored indigenous recipes documented in ancient leaf manuscripts, it promotes overall wellness and resilience.

### Preparation & Use:

Add ½ teaspoon of the powder to 1 cup of boiled water. Steep for 8–10 minutes, strain, and enjoy twice daily for best results.

### Ingredients:

Coriander (*Coriandrum sativum*), Weniwel (*Coscinium fenestratum*), Ginger (*Zingiber officinale*), Heenaratta (*Alpinia calcarata*).

Product Registered by Department of Ayurveda, Sri Lanka.  
ISO 9001:2015, ISO 14001:2015, ISO 22000, HACCP, GMP & HALAL Certified.



BEAM HELA OSU LANKA (PVT) LTD.  
Ayu.Com. Reg. No: 6/2/1/01/03

## Sudarshana Tablets (Relief from Viral Fever, Coughs and Immune Support)

Sudarshana Tablets are a powerful Ayurvedic immune-support formulation, traditionally used to help the body combat viral and bacterial infections. They offer broad-spectrum benefits, including antipyretic, anti-inflammatory, anti-rheumatic, antihistamine, antioxidant, analgesic, and hepatoprotective effects. Sudarshana is ideal for supporting relief from viral fever, coughs, colds, sore throat, runny nose, phlegm, allergic rhinitis, bronchitis, inflammatory arthritis, pain, and certain allergic skin conditions.

### Recommended Use:

Ages 5–12: ½–1 tablet

Ages 12 and above: 1–2 tablets

Take three times daily before meals or as advised by a qualified healthcare professional.

### Ingredients:

Sri Lankan Bee's Honey and authentic 53 Ayurvedic herbs. Kiratha (*Andrographis paniculata*), Long pepper (*Piper longum*), Ginger (*Zingiber officinale*), Pepper (*Piper nigrum*), Arualu (*Terminalia chebula*), Bedda nuts (*Terminalia bellirica*), Indian gooseberry (*Phyllanthus emblica*), Liquorice (*Glycyrrhiza glabra*), Nutmeg (*Myristica fragrans*), Clove (*Syzygium aromaticum*), Cinnamon (*Cinnamomum zeylanicum*), Wild eggplant (*Solanum xanthocarpum*), Calumba wood/Venivel (*Coscinium fenestratum*), Turmeric (*Curcuma longa*), Ashwagandha (*Withania somnifera*) etc.

Product Registered by Department of Ayurveda, Sri Lanka.  
ISO 9001:2015, ISO 14001:2015, ISO 22000, HACCP, GMP & HALAL Certified.



# COLD

## Nirgundyadi Oil (Relief from Colds, Sinusitis and Headaches)

Nirgundyadi Oil is a traditional Ayurvedic formulation designed to provide relief from colds, sinusitis, headaches—including those associated with high blood pressure—and body or joint discomfort. Its soothing herbal properties help restore comfort and promote overall well-being.

### **Usage:**

Apply a few drops to the affected area and massage gently as needed.

### **Ingredients:**

This formula is prepared according to the Ayurvedic Pharmacopoeia



Product Registered by Department of Ayurveda, Sri Lanka.  
ISO 9001:2015, ISO 14001:2015, ISO 22000, HACCP, GMP & HALAL Certified.

BEAM HELA OSU LANKA (PVT) LTD.  
Ayu.Com. Reg. No: 6/2/1/01/03

# VITALITY BOOSTERS

## Welpenela Amukkara Syrup (Increase Sexual Vigour & Enjoyment)

Welpenela Amukkara Syrup is a potent herbal formulation designed to enhance sexual vitality, improve endurance, and restore nervous strength and overall vigor. It is an excellent natural remedy for supporting hormonal balance in both men and women, promoting vitality, stamina, and overall well-being.

### Recommended Dosage:

Adults: Take 30 ml (2 tablespoons) three times daily before meals, or as advised by a qualified physician.

### Ingredients:

Welpenela (*Cardiospermum halicacabum*), Amukkara (*Withania somnifera*).

Product Registered by Department of Ayurveda, Sri Lanka.  
ISO 9001:2015, ISO 14001:2015, ISO 22000, HACCP, GMP & HALAL Certified.



BEAM HELA OSU LANKA (PVT) LTD.  
Ayu.Com. Reg. No: 6/2/1/01/03

# VITALITY BOOSTERS

## Ashwagandha Capsule (Reduces Stress & Boosts Energy)

Ashwagandha Capsule contains pure Ashwagandha (*Withania somnifera*), a renowned rejuvenative herb valued for its powerful anti-inflammatory, anti-anxiety, and anti-depressant properties. It supports overall physical and mental well-being by helping to reduce stress, anxiety, and fatigue, while promoting calmness and emotional balance. This formulation also enhances sexual vitality, improves appetite, and helps restore strength, stamina, and muscular tone. Widely respected for its adaptogenic benefits, Ashwagandha further supports long-term health and resilience.

### Recommended Dosage:

Take 1 capsule twice daily, or as directed by a qualified physician.

### Ingredients:

Ashwagandha (*Withania somnifera*).

Product Registered by Department of Ayurveda, Sri Lanka.  
ISO 9001:2015, ISO 14001:2015, ISO 22000, HACCP, GMP & HALAL Certified.



BEAM HELA OSU LANKA (PVT) LTD.  
Ayu.Com. Reg. No: 6/2/1/01/03

# VITALITY BOOSTERS

## Ashwaganda Rasayana (Enhancing Sexual Vitality and Restoring Nervous Strength)

Ashwagandha Rasayana is a classic rejuvenative formulation renowned for enhancing sexual vitality, restoring nervous strength, and promoting overall physical and mental resilience. It is an excellent natural remedy for supporting hormonal balance in both men and women, helping to combat fatigue, stress, and age-related weakness.

This revitalizing rasayana supports endurance, reproductive health, and nervous system function, contributing to improved vitality and well-being.

### **Dosage:**

Take 1–2 teaspoons (5–10 g) twice daily with warm cow's milk, or as advised by a qualified physician.

### **Ingredients:**

This formula is prepared according to the Ayurvedic Pharmacopoeia, and the main ingredient is Amukkara (*Withania somnifera*).

Product Registered by Department of Ayurveda, Sri Lanka.  
ISO 9001:2015, ISO 14001:2015, ISO 22000, HACCP, GMP & HALAL Certified.



BEAM HELA OSU LANKA (PVT) LTD.  
Ayu.Com. Reg. No: 6/2/1/01/03

# VITALITY BOOSTERS

## Kushmanda Rasayana (Helps Restore Vitality, Energy, and General Wellness)

Kushmanda is a rejuvenating herbal paste traditionally valued for its ability to strengthen the body, support digestion, and boost immunity. It promotes urinary tract health, serves as a natural remedy for leucorrhea, and enhances women's overall well-being. This versatile formulation helps restore vitality, energy, and general wellness, making it an ideal addition to a balanced lifestyle.

### Dosage:

Take 1–2 teaspoons (5–10 g) twice daily with warm cow's milk, or as directed by a qualified physician.

### Ingredients:

This formula is prepared according to the Ayurvedic Pharmacopoeia, and the main ingredient is Ash gourd (*Benincasa hispida*).

Product Registered by Department of Ayurveda, Sri Lanka.  
ISO 9001:2015, ISO 14001:2015, ISO 22000, HACCP, GMP & HALAL Certified.



# VITALITY BOOSTERS

## Thripala Plus (Enhance Metabolic Balance and Digestive Health)

Thripala Plus Tablet is a vital traditional formulation developed to support digestive health and appetite, particularly in cases of anorexia caused by warm infections, indigestion, and flatulence. It helps enhance nutrient absorption and stimulates a healthy appetite, contributing to overall well-being.

Enriched with the benefits of Triphala, this formulation also supports eye health, liver function, and healthy blood circulation. Thripala Plus Tablet is further recommended as a supportive supplement in the management of high cholesterol levels, obesity, and diabetes, promoting metabolic balance and general health.

### Recommended Dosage:

Take 2 tablets twice daily, before or after meals.

For constipation, take 2–4 tablets after dinner, or as directed by a qualified physician.

### Ingredients:

Aralu (*Terminalia chebula*), Bulu (*Terminalia bellirica*), Indian gooseberry/Nelli (*Phyllanthus emblica*) and Liqourice/ Welmee (*Glycyarahiza glabra*).

Product Registered by Department of Ayurveda, Sri Lanka.  
ISO 9001:2015, ISO 14001:2015, ISO 22000, HACCP, GMP & HALAL Certified.



# VITALITY BOOSTERS

## Jeewa

(Improve Digestion, Nutrient Absorption, and Appetite Specially for Children)

Jeewa is a trusted traditional formulation designed to support the management of anorexia and loss of appetite caused by warm infections, indigestion, flatulence, and related digestive imbalances. It helps improve digestion, nutrient absorption, and appetite, supporting overall digestive health and vitality.

### Dosage:

Ages 1–3 years: 5–10 ml

Ages 3–6 years: 10–15 ml

Above 6 years: 15 ml

Take three times daily before meals, or as directed by a qualified physician.

### Ingredients:

Velvet leaf (*Cissampelos pareira*), Cardamom (*Elettaria cardamomum*), Pepper (*Piper nigrum*), Spikenard (*Nardostachys jatamansi*), Dry Turmeric (*Curcuma longa*), Nut grass (*Cyperus rotundus*) tubers, Stamens of Naa flower (*Mesua ferrea*), Indian gooseberry (*Phyllanthus emblica*), Siviya (*Piper chuyva*), Sandalwood (*Santalum album*), Long pepper (*Piper longum*) etc.

Product Registered by Department of Ayurveda, Sri Lanka.

ISO 9001:2015, ISO 14001:2015, ISO 22000, HACCP, GMP & HALAL Certified.



BEAM HELA OSU LANKA (PVT) LTD.

Ayu.Com. Reg. No: 6/2/1/01/03

# CHOLESTEROL

## LipidPro (Cholesterol Controller)

Beam LipidPro is a premium Ayurvedic supplement formulated to support the maintenance of healthy blood cholesterol levels. Its natural blend promotes cardiovascular wellness and overall vitality.

### Recommended Dosage:

Adults should take 2 capsules daily after meals or as advised by a healthcare professional. Do not exceed the recommended dosage.

### Ingredients:

Cinnamon (*Cinnamomum zeylanicum*), Curry leaves (*Murraya koenigii*), Garlic (*Allium sativum*).



Product Registered by Department of Ayurveda, Sri Lanka.  
ISO 9001:2015, ISO 14001:2015, ISO 22000, HACCP, GMP & HALAL Certified.

BEAM HELA OSU LANKA (PVT) LTD.  
Ayu.Com. Reg. No: 6/2/1/01/03

# FAT BURNER

## Ayushtrol (Support Balance Cholesterol Levels and Holistic Wellness)

Ayushtrol is a carefully crafted Ayurvedic formulation designed to support healthy cholesterol levels, promote weight management, enhance natural appetite, and improve overall digestive health. It also helps relieve aches and rheumatic discomfort, contributing to holistic wellness.

For optimal results, consult a healthcare professional. Suggested usage based on cholesterol levels:

140–200 mg/dL: 1 teaspoon (5g) once daily

200–239 mg/dL: 1 teaspoon twice daily

Above 240 mg/dL: 1 teaspoon three times daily

Take after or with meals. Regular monitoring of cholesterol levels is recommended.

### Ingredients:

Malabar tamarind (*Garcinia cambogia*), Garlic (*Allium sativum*), Curry leaves (*Murraya koenigii spreng*), Fenugreek (*Trigonella foenum-graecum*), Aralu (*Terminalia chebula*), Black cumin (*Carum carvi*).

Product Registered by Department of Ayurveda, Sri Lanka.  
ISO 9001:2015, ISO 14001:2015, ISO 22000, HACCP, GMP & HALAL Certified.



# HYPERTENSION

## Sarpaganda Watte (Management of High Blood Pressure)

Sarpaganda Watte is a traditional herbal formulation carefully prepared to support the management of high blood pressure, insomnia, and mental and neurological disorders, including epileptic seizures (fits). Known for its calming and balancing properties, it helps promote relaxation, supports healthy nervous system function, and contributes to overall mental well-being.

### Dosage:

Take 1–2 tablets daily with warm water, or as directed by a qualified physician.

Advisory: To be used under medical supervision.

### Ingredients:

Sarpagandha (*Rauvolfia serpentina*)



Product Registered by Department of Ayurveda, Sri Lanka.  
ISO 9001:2015, ISO 14001:2015, ISO 22000, HACCP, GMP & HALAL Certified.

# GASTRITIS

## Gastritis Relief (Help Ease Gastritis, Gastric Ulcers and Heartburn)

A trusted formulation to help ease gastritis, gastric ulcers, heartburn, nausea, and flatulence. Supports digestive comfort and overall gut health naturally.

### Recommended Dosage:

Ages 6–15:

Liquid: 1 tablespoonful (15 ml) three times daily before meals

Pills: 1 pill (1 gulli) twice daily before meals, swallowed with warm water

Ages 15 and above:

Liquid: 2 tablespoonfuls (30 ml) three times daily before meals

Pills: 2 pills (2 gullis) twice daily before meals, swallowed with warm water

Note: Consult a physician for children under 6 years of age.

### Ingredients:

Vetiver (*Vetiveria zizanioides*), Nut Grass (*Cyperus rotundus*), Green Gram (*Vigna radiata*) etc.

Product Registered by Department of Ayurveda, Sri Lanka.  
ISO 9001:2015, ISO 14001:2015, ISO 22000, HACCP, GMP & HALAL Certified.



# OBEYSITY

## Cinnamon with Bee honey (Supports Heart Health by Improving Cholesterol Levels and Regulating Blood Sugar)

Cinnamon with Beehoney is a natural herbal preparation formulated to support healthy cholesterol levels, weight management, blood pressure balance, and blood sugar regulation. When used appropriately, this synergistic blend helps promote metabolic health and overall vitality, making it an ideal addition to a balanced lifestyle.

### Dosage:

Take one teaspoon (8–10 g) twice daily, or as directed by a qualified physician.

### Ingredients:

Cinnamon (*Cinnamomum zeylanicum*) and Bee Honey.



Product Registered by Department of Ayurveda, Sri Lanka.  
ISO 9001:2015, ISO 14001:2015, ISO 22000, HACCP, GMP & HALAL Certified.

# DIABETES

## DiabPro (Sugar Balance Supporter)

Beam DiabPro is specially formulated to help support and maintain healthy blood sugar levels naturally, promoting overall wellness.

### Recommended Dosage:

Adults: Take 2 capsules daily after meals or as directed by your physician. Do not exceed the recommended dose. Consult your doctor before use if pregnant, nursing, taking medications, or under 18 years of age.

### Ingredients:

Ma-dan (*Syzygium cumini*), Ranawara (*Senna auriculata*), Fenugreek seeds (*Trigonella foenum-graecum*).



Product Registered by Department of Ayurveda, Sri Lanka.  
ISO 9001:2015, ISO 14001:2015, ISO 22000, HACCP, GMP & HALAL Certified.

BEAM HELA OSU LANKA (PVT) LTD.  
Ayu.Com. Reg. No: 6/2/1/01/03

## Nelli Rasakinda Tea (Promote Overall Body Balance and Support Urinary Health)

Nelli Rasakinda Tea is a revitalizing herbal infusion crafted from the nutrient-rich Indian gooseberry (Amla). Traditionally valued for its restorative properties, this tea helps support urinary health, relieve discomfort from excessive thirst and burning sensations, and promote overall body balance.

In addition, it may help manage excessive sweating, support joint comfort, and contribute to healthy, nourished skin.

### Preparation Method:

Steep one tea bag in boiling water for 3–4 minutes. Gently squeeze the tea bag to release its full flavor. Sweeten with sugar as desired.

### Ingredients:

Nelli (*Phyllanthus emblica*), Rasakinda (*Tinospora cordifolia*)

Product Registered by Department of Ayurveda, Sri Lanka.  
ISO 9001:2015, ISO 14001:2015, ISO 22000, HACCP, GMP & HALAL Certified.



# HERBAL TEAS & DRINKS

## Senna Tea (Natural Cleansing and Supports Blood Purification)

Ranawara Tea is a traditional herbal infusion known for its natural cleansing and wellness-promoting properties. This soothing tea supports blood purification, helps regulate blood sugar levels, and provides a cooling effect while enhancing the skin's natural radiance. Renowned for its restorative benefits, Ranawara Tea also aids urinary health, promotes digestive wellness, and assists in maintaining a balanced, healthy body.

### Preparation Method:

Steep one tea bag in boiling water for 3–4 minutes. Gently squeeze the tea bag to release its full flavor. Sweeten with sugar as desired.

### Ingredients:

Ranawara Flower (*Senna auriculata*) and Green Tea (*Camellia sinensis*).

Product Registered by Department of Ayurveda, Sri Lanka.  
ISO 9001:2015, ISO 14001:2015, ISO 22000, HACCP, GMP & HALAL Certified.



## Curry Leaves Tea

(Rich in Antioxidants and Anti-carcinogenic Properties)

Curry Leaves Tea is a unique herbal infusion crafted from fresh curry leaves, celebrated for its natural wellness benefits. Rich in antioxidants and known for its anti-carcinogenic properties, this tea helps support overall health while promoting appetite and aiding digestion. Regular enjoyment of Curry Leaves Tea may help maintain healthy cholesterol levels and assist in supporting balanced blood sugar, making it a flavorful and functional choice for daily wellness.

### Preparation Method:

Steep one tea bag in boiling water for 3–4 minutes. Gently squeeze the tea bag to release its full flavor. Sweeten with sugar as desired.

### Ingredients:

Curry leaves (*Murraya koenigii*) and Green tea (*Camellia sinensis*).



Product Registered by Department of Ayurveda, Sri Lanka.  
ISO 9001:2015, ISO 14001:2015, ISO 22000, HACCP, GMP & HALAL Certified.

## Fenugreek – Garlic Tea (Helps Reduce High Cholesterol and Obesity)

Fenugreek – Garlic Tea is a powerful herbal infusion combining fenugreek and garlic, traditionally valued for their wellness-enhancing properties. This herbal blend supports healthy cholesterol levels and aids in weight management, making it an excellent choice for maintaining metabolic balance.

The tea also helps relieve back discomfort and supports joint health, including the management of rheumatic conditions, offering a comforting and restorative daily beverage.

### Preparation Method:

Steep one tea bag in boiling water for 3–4 minutes. Gently squeeze the tea bag to release its full flavor. Sweeten with sugar as desired.

### Ingredients:

Fenugreek seeds (*Trigonella foenum-graecum*), Garlic (*Allium sativum*) and Green Tea (*Camellia sinensis*).

Product Registered by Department of Ayurveda, Sri Lanka.  
ISO 9001:2015, ISO 14001:2015, ISO 22000, HACCP, GMP & HALAL Certified.



## Belimal Herbal Drink ( Promote Digestive, Cooling and Detoxification Properties)

Belimal Herbal Drink is a soothing herbal infusion formulated as a healthy alternative to regular tea. Crafted from traditional herbal ingredients, it supports digestive wellness by helping relieve gastritis and heartburn. The drink aids in natural blood purification, promotes a clear and radiant complexion, and provides a cooling effect that refreshes the body.

Belimal Herbal Drink also helps alleviate excessive thirst and supports healthy bowel function, making it an ideal choice for daily wellness and hydration.

### **Preparation Method:**

Place one tea bag in boiling water and steep for 3–4 minutes. Gently squeeze the tea bag to release the full flavor. Sweeten with sugar or jaggery if desired.

### **Ingredients:**

Bael Flowers (*Aegle marmelos*)

Product Registered by Department of Ayurveda, Sri Lanka.  
ISO 9001:2015, ISO 14001:2015, ISO 22000, HACCP, GMP & HALAL Certified.



# HERBAL TEAS & DRINKS

## Heen Bovitiya Drink (Liver Health Supporter)

Heen Bovitiya Drink is a traditional herbal infusion formulated to support liver health and natural detoxification. Known for its wellness-supporting properties, this drink helps maintain healthy blood sugar levels and supports improved insulin sensitivity as part of a balanced lifestyle.

The infusion also promotes smooth digestion and helps reduce internal inflammation, making it an ideal choice for daily herbal nourishment and metabolic support.

### Preparation Method:

Place one tea bag in boiling water and steep for 3–4 minutes. Gently squeeze the tea bag to extract the full flavor. Sweeten with sugar if desired.

### Ingredients:

Heen Bovitiya (*Osbeckia octandra*(L.).

Product Registered by Department of Ayurveda, Sri Lanka.  
ISO 9001:2015, ISO 14001:2015, ISO 22000, HACCP, GMP & HALAL Certified.



BEAM HELA OSU LANKA (PVT) LTD.  
Ayu.Com. Reg. No: 6/2/1/01/03

# HERBAL TEAS & DRINKS

## Cinnamon Tea

(Helps Boost Immunity, Fight Inflammation, and Support Heart Health)

Cinnamon Tea is a fragrant herbal infusion crafted from premium cinnamon, traditionally valued for its wellness-supporting properties. This soothing tea helps support healthy cholesterol levels, aids in weight management, and promotes balanced blood sugar. In addition, Cinnamon Tea enhances digestion, making it a flavorful and functional choice for daily wellness.

### Preparation Method:

Place one tea bag in boiling water and steep for 3–4 minutes. Gently squeeze the tea bag to extract the full flavor. Sweeten with sugar if desired.

### Ingredients:

High quality Sri Lankan Cinnamon (*Cinnamomum zeylanicum*) and Green tea (*Camellia sinensis*).

Product Registered by Department of Ayurveda, Sri Lanka.  
ISO 9001:2015, ISO 14001:2015, ISO 22000, HACCP, GMP & HALAL Certified.



BEAM HELA OSU LANKA (PVT) LTD.  
Ayu.Com. Reg. No: 6/2/1/01/03

# HERBAL TEAS & DRINKS

## Iramusu Herbal Drink (Effectively Detoxifies the Blood, Improves Skin Complexion, and Manages Urinary Issues)

Iramusu Herbal Drink is a refreshing herbal infusion designed as a natural alternative to regular tea. Traditionally valued for its cleansing properties, this drink supports natural blood purification, promotes a healthy and radiant complexion, and provides a cooling effect that helps balance body heat.

The infusion also assists in reducing body odor, supports urinary tract health, and helps relieve excessive thirst, making it an ideal choice for daily hydration and wellness.

### Preparation Method:

Place one tea bag in boiling water and steep for 3–4 minutes. Gently squeeze the tea bag to extract the full flavor. Sweeten with sugar if desired.

### Ingredients:

Iramusu (*Hemidesmus indicus*)

Product Registered by Department of Ayurveda, Sri Lanka.  
ISO 9001:2015, ISO 14001:2015, ISO 22000, HACCP, GMP & HALAL Certified.



BEAM HELA OSU LANKA (PVT) LTD.  
Ayu.Com. Reg. No: 6/2/1/01/03

## Ginger Coriander Tea (Boosts Immunity and Relieve Cold/ Flu Symptoms)

Inguru Kothamalli Tea is a warming herbal infusion made from ginger and coriander, traditionally valued for its refreshing and therapeutic properties. This soothing blend helps provide relief during flu and cold conditions while supporting overall body freshness.

The tea also assists in maintaining urinary health, helps reduce excessive thirst, and supports natural detoxification, contributing to a feeling of lightness and balance throughout the day.

### Preparation Method:

Place one tea bag in boiling water and steep for 3–4 minutes. Gently squeeze the tea bag to extract the full flavor. Sweeten with sugar if desired.

### Ingredients:

Ginger (*Zingiber officinale*), Coriander seeds (*Coriandrum sativum*) and Green tea (*Camellia sinensis*).

Product Registered by Department of Ayurveda, Sri Lanka.  
ISO 9001:2015, ISO 14001:2015, ISO 22000, HACCP, GMP & HALAL Certified.



## Butterfly Pea Flower Drink (Traditional Brain Tonic and Supporting Skin/Hair Health)

Butterfly Pea Flower Drink is a vibrant herbal infusion renowned for its high antioxidant content. Naturally rich in anthocyanins, this refreshing tea helps combat free radicals while supporting memory, focus, and mental clarity. Its gentle calming properties promote relaxation and emotional balance, making it ideal for everyday wellness. This herbal drink also supports healthy digestion, assists in maintaining weight balance, and enhances skin radiance. With its naturally uplifting qualities and striking blue hue, Butterfly Pea Flower Drink offers both visual delight and holistic benefits.

### Preparation Method:

Place one tea bag in boiling water and steep for 1–2 minutes. Gently squeeze the tea bag to release the full flavor. Sweeten with sugar to taste.

### Ingredients:

Butterfly Pea flower (*Clitoria ternatea*).

Product Registered by Department of Ayurveda, Sri Lanka.  
ISO 9001:2015, ISO 14001:2015, ISO 22000, HACCP, GMP & HALAL Certified.



## Oxi Fresh - Herbal Mouth Wash (Herbal Mouth Wash Promote Oral Health and Maintain a Fresh, Clean Mouth)

Oxi Fresh is an advanced herbal mouthwash designed to promote oral health and maintain a fresh, clean mouth. It helps stop gum bleeding, prevent pyorrhea, tooth decay, and plaque formation, while reducing tooth sensitivity. Regular use also helps eliminate bad breath (halitosis) and keeps your mouth feeling fresh throughout the day.

### Dosage:

Shake well before use. Rinse thoroughly for 30 seconds and expel. If needed, dilute with a small amount of water. For optimal results, use twice daily. For mouthwash use only.

### Ingredients:

Pila (*Tephrosia purpurea*) roots, Kumbuk (*Terminalia arjuna*), Bullet-woodtree/Munamal (*Mimusops elengi*), Cinnamon (*Cinnamom zeylanicum*), Clove (*Syzygium aromaticum*) and etc.

Product Registered by Department of Ayurveda, Sri Lanka.  
ISO 9001:2015, ISO 14001:2015, ISO 22000, HACCP, GMP & HALAL Certified.



## Mosquito Repellent Spray

Beam Mosquito Repellent Spray is a natural and effective solution made from citronella, cinnamon, and neem extracts. It provides reliable protection against mosquito bites, keeping you and your surroundings safe and comfortable.

### Dosage:

Shake well before each use. Apply lightly on skin, clothing, or nearby environment. Avoid contact with eyes and face. Adult supervision is recommended for children. Test on a small patch of skin before use, and discontinue if any allergic reaction occurs.

### Ingredients:

Citronella oil (*Cymbopogon nardus*), neem oil (*Azadirachta indica*),-  
Cinnamon oil (*Cinnamomum zeylanicum*).



Product Registered by Department of Ayurveda, Sri Lanka.  
ISO 9001:2015, ISO 14001:2015, ISO 22000, HACCP, GMP & HALAL Certified.

# HAIR CARE

## Castor Oil (Natural Hair Applicator)

Our Castor Oil is a pure, natural hair applicator, carefully purified and lightly perfumed, making it ideal for setting styles with rollers, curlers, or free styling. It nourishes all hair types, adding body, shine, and vitality, while promoting overall hair health.

### Usage:

Apply directly to hair as part of your daily hair care routine.

### Ingredients:

Castor oil plant (*Ricinus communis*), IFRA certified Fragrance.



Product Registered by Department of Ayurveda, Sri Lanka.  
ISO 9001:2015, ISO 14001:2015, ISO 22000, HACCP, GMP & HALAL Certified.

## Maha Neelayadee Oil (Reducing Hair Fall and Nourishes the Scalp)

Mahaneelayadee Oil is a versatile herbal oil that prevents hair fall, premature greying, and dullness, while nourishing the scalp for healthy, vibrant hair. Beyond hair care, it supports headache relief, reduces eye irritation and watery eyes, improves eyesight, and promotes better sleep.

### Usage:

Apply daily to the scalp and hair, gently massage, and use regularly for best results.

### Ingredients:

This formula is prepared according to the Ayurvedic Pharmacopoeia.



Product Registered by Department of Ayurveda, Sri Lanka.  
ISO 9001:2015, ISO 14001:2015, ISO 22000, HACCP, GMP & HALAL Certified.

## Sunilya Hair Oil (Supporting Scalp Health and Strengthening Hair Roots)

Sunilya Hair Oil combines a traditional Ayurvedic formulation with modern refinement techniques, featuring potent herbs like Mukunuwenna and Keekiridiya. This nourishing oil works both externally and internally, supporting scalp health and strengthening hair roots.

With regular use, Sunilya Hair Oil helps control premature greying, reduce hair fall, and deeply nourish the scalp and hair, leaving hair soft, shiny, and lustrous. It also prevents split ends and dryness, relieves eye strain, provides a cooling sensation to the head and eyes, and helps reduce headaches and heaviness.

### Usage:

Apply daily to the scalp and hair, gently massage, and use regularly for best results.

### Ingredients:

Mukunuwenna (*Alternanthera sessilis*), Keekirindiya (*Eclipta prostrata*), Indian gooseberry/Nelli (*Phyllanthus emblica*), Licorice/Welmee (*Glycyrrhiza glabra*).

Product Registered by Department of Ayurveda, Sri Lanka.  
ISO 9001:2015, ISO 14001:2015, ISO 22000, HACCP, GMP & HALAL Certified.



# ACHES & PAINS

## Sandi Suwaya (Relieve Joint Pain and Inflammation)

Sandi Suwaya is a trusted Ayurvedic oil traditionally used to relieve knee stiffness, muscle inflammation, back pain, shoulder discomfort, and other Vata-related joint conditions. Its deeply soothing properties help improve mobility and ease everyday aches.

### Usage:

For best results, gently warm the affected area with a dry cloth, then apply a few drops and massage thoroughly.

### Ingredients:

This formula is prepared according to the Ayurvedic Pharmacopoeia.



Product Registered by Department of Ayurveda, Sri Lanka.  
ISO 9001:2015, ISO 14001:2015, ISO 22000, HACCP, GMP & HALAL Certified.

# ACHES & PAINS

## Beam Balm (Herbal Body Ache Reliever)

Beam Balm is a trusted herbal formulation designed to provide fast and effective relief from headaches, joint and muscular aches, sprains, cramps, toothaches, and flank pain.

### Usage:

When gently massaged onto the affected area, it delivers a comforting warm sensation that helps soothe discomfort and restore ease naturally.

### Ingredients:

Citronella oil (*Cymbopogon*), Clove oil (*Syzygium aromaticum*), Cinnamon oil (*Cinnamomum verum*), Eucalyptus oil (*Eucalyptus globulus*), and Bees wax.



Product Registered by Department of Ayurveda, Sri Lanka.  
ISO 9001:2015, ISO 14001:2015, ISO 22000, HACCP, GMP & HALAL Certified.

# ACHES & PAINS

## Beam Head Master (Headache and Pain Reliever)

Beam Head Master Roll-On is a carefully formulated herbal blend designed to ease headaches caused by stress, tension, migraines, and menstrual discomfort. Its calming aroma and cooling application help restore clarity and relaxation within moments.

### Usage:

Simply roll onto the temples, forehead, and neck, inhale deeply, and let the soothing relief unfold. Reapply as needed.

### Ingredients:

Eucalyptus Oil (*Eucalyptus globulus*), Wintergreen oil (*Gaultheria procumbens*), Cinnamon Oil (*Cinnamomum zeylanicum*), Pangiri oil (*Cymbopogon nardus*), Menthol, Camphor (*Cinnamomum camphora*).

Product Registered at the Ministry of Health, Malaysia.  
Product Registered by Department of Ayurveda, Sri Lanka.  
ISO 9001:2015, ISO 14001:2015, ISO 22000, HACCP, GMP & HALAL Certified.



BEAM HELA OSU LANKA (PVT) LTD.  
Ayu.Com. Reg. No: 6/2/1/01/03

# ACHES & PAINS

## Camphor Balm (Herbal Body Ache Reliever)

Camphor Balm is a highly effective herbal remedy formulated to relieve body aches, swelling from rheumatism, neuralgia, contusions, and sprains. It is also recommended as an external application to ease chest discomfort associated with phlegm-related lung conditions.

### Usage:

Apply to the affected area and gently massage for soothing, targeted relief.

### Ingredients:

Sarsapathi oil, Cinnamon Oil, Menthol, Camphor and Bee's wax as a base.



Product Registered by Department of Ayurveda, Sri Lanka.  
ISO 9001:2015, ISO 14001:2015, ISO 22000, HACCP, GMP & HALAL Certified.

## Beam Fiel (Antifungal Ointment)

Beam Fiel Antifungal Ointment is a trusted topical formulation traditionally used in the management of fungal infections such as Aluham, Tinea Capitis (scalp), Tinea Faciei (face), Tinea Barbae (chin), Tinea Cruris (Dhobies' itch), Tinea Corporis (ringworm), and Tinea Pedis (sole of the foot). Its carefully selected herbal actives help support healthy skin and promote recovery.

### Usage:

Clean the affected area with an antiseptic solution or lukewarm water. After the skin is dry, apply Beam Fiel twice daily for about one week. Regular use helps relieve and cure the above-mentioned conditions.

### Ingredients:

Coconut oil, *Senna alata* leaf extract, *Curcuma longa* rhizome extract, Bees wax, Vaseline.  
Benzoic acid and Salicylic acid as preservatives.

Product Registered by Department of Ayurveda, Sri Lanka.  
ISO 9001:2015, ISO 14001:2015, ISO 22000, HACCP, GMP & HALAL Certified.



# ARTHRITIS

## Arthritis Lepaya (Effective Relief for Pain and Inflammation due to Arthritis)

Arthritislepaya is a specialized Ayurvedic formulation designed to provide fast, effective relief from pain and inflammation in the knees and small joints associated with arthritis. Its warming action helps soothe stiffness and restore comfort.

### Usage:

Apply to the affected area and massage gently until a comforting warmth is felt.

### Ingredients:

Sesame seed (*Sesamum indicum*), Camphor, Menthol, Vaseline, Beewax.



Product Registered by Department of Ayurveda, Sri Lanka.  
ISO 9001:2015, ISO 14001:2015, ISO 22000, HACCP, GMP & HALAL Certified.

BEAM HELA OSU LANKA (PVT) LTD.  
Ayu.Com. Reg. No: 6/2/1/01/03

# CUTS & WOUNDS

## Beam Cream (Herbal Medicated Wound Cure)

A trusted, medicated cream formulated to support the healing of burns, cuts, wounds, and foot sores.

### Usage:

Clean the affected area thoroughly, then apply a thin layer of Beam Cream once daily to promote faster recovery and soothe discomfort.

### Ingredients:

Seethodaka Oil, Pushkara and Bees Wax.



Product Registered by Department of Ayurveda, Sri Lanka.  
ISO 9001:2015, ISO 14001:2015, ISO 22000, HACCP, GMP & HALAL Certified.

BEAM HELA OSU LANKA (PVT) LTD.  
Ayu.Com. Reg. No: 6/2/1/01/03

# CUTS & WOUNDS

## Rohanekash (Herbal Remedy for Eczema, Psoriasis and Ulcers)

Beam Rohanekash Balm is a highly recommended natural remedy for a variety of skin conditions, including boils, chronic wounds, eczema (both wet and dry), psoriasis, ulcers, and acne (pimples). This soothing balm combines potent Ayurvedic ingredients known for their healing properties, making it an effective treatment for a range of skin ailments. Its formulation targets inflammation, promotes faster healing, and helps soothe the skin, restoring it to a healthier state.

### Usage:

Apply Rohanekash Lepa evenly on the affected areas before bedtime. In the morning, gently expose the face to warm steam and rinse with warm water. Avoid contact with eyes and mouth for safe use.

### Ingredients:

The formulation is developed in accordance with the Unani Pharmacopoeia.

Product Registered by Department of Ayurveda, Sri Lanka.  
ISO 9001:2015, ISO 14001:2015, ISO 22000, HACCP, GMP & HALAL Certified.



# CUTS & WOUNDS

## Seethodaka Oil (Support the Recovery of Cuts, Burns and Chronic Ulcers)

A potent healing oil formulated to support the recovery of cuts, burns, oozing wounds, and chronic ulcers. Promotes faster, soothing healing with regular use.

### **Usage:**

Apply a few drops to the affected area and massage gently as needed.

### **Ingredients:**

This formula is prepared according to the Ayurvedic Pharmacopoeia.



Product Registered by Department of Ayurveda, Sri Lanka.  
ISO 9001:2015, ISO 14001:2015, ISO 22000, HACCP, GMP & HALAL Certified.



Beam Hela Osu Lanka (Pvt) Ltd.

[www.beamhelaosulanka.lk](http://www.beamhelaosulanka.lk)