



Floriculture

from Sri Lanka



Sri Lanka - The Choice of All

Sri Lanka is abound with arable lands of many climatic variations from temperate to tropical and sub tropical, with naturally occurring resources which are conducive for a agro industrial economy. The natural and man-made facilities make Sri Lanka the ideal choice for agriculture and agro-based industries.

Naturally rich soil; a wide range of agro-climatic zones; a well distributed rainfall pattern together with a strong network of irrigation facilities; and supported by the skills of an intelligent, educated younger generation; facilitate uninterrupted agriculture production in the country. A special feature of Sri Lanka is the agricultural diversity accounted for by the varying climatic conditions.

'Mother nature' has made Sri Lanka ideal for agriculture where the agricultural sector is backed by extensive agro-based infrastructure. Facilitated by appropriate export service facilities, Sri Lanka has become the best choice for investment in export agriculture.

Trincomalee is Asia's largest and one of the best natural harbours which belongs to Sri Lanka and the commercial port in Colombo is rated among the most commercial and efficient harbours. It offers a comprehensive range of services to shippers and is fast developing into one of the major centres for entrepot trade in the region. A well-established road-rail network and high ways constantly developed to meet the demand of the modern age, facilitates production, for both local consumption and export trade. Modern communication systems are well established in the Island. Sri Lanka is well served by major international air lines while the national carrier, Sri Lankan Air Lines itself operates regular and charter services to major destinations in the world, for passengers and commercial cargo. Even private air charter service is available exclusively for cargo. The cargo village at the Colombo International Airport is equipped with cold room facilities and many more modern types of equipments.

The export led growth policy of the Government

is implemented through the Sri Lanka Export Development Board which is the apex body for development and promotion of exports from the country. The Export Agriculture Division of the Board co-ordinates and implements the supportive export led strategies in close liaison with the private sector.

Even though rich traditions passed down from the generations are still practiced by the farming community, Sri Lanka is fast becoming an emerging economy which utilizes the state-of-the-art technology in agricultural production.







FLORICULTURE INDUSTRY IN SRI LANKA

Sri Lanka is situated in the tropical belt; the climatic condition in Sri Lanka is predominantly tropical which facilitates production of floriculture throughout the year. The climatic variation coupled with a diverse terrain enables Sri Lanka to develop a wide range of floriculture products ranging from tropical to temperate flora. Further, Sri Lanka also enjoys a special feature where the supplies of these floriculture products are free from seasonal interruption.

The commercial exports which began in 1979/1980, with the establishment of a few export oriented ornamental plant nurseries, has now increased to more than 60 companies. These are now in full operation producing floriculture crops for export. Today Sri Lanka is deemed as one of the best quality producing centres in the world and as a reliable supplier of a wide range of quality floriculture products across the world.

The products are grown providing optimum micro climatic conditions under poly or shade houses. The natural substrate coco peat, a bi-product of the coconut fibre industry is also freely available as a growing medium for floriculture and advanced irrigation techniques are also applied. A well equipped plant quarantine facility is available at the Department of Agriculture to ensure that the supply of plants and flowers are free from quarantine pests.

Europe is the main market for floriculture products; 60% of Sri Lankan exports are destined to the Europe, while Japan, Middle East, UK, UAE, Australia and Korea make up the other key markets.

Export companies have obtained environmental/ quality / social certifications such as GLOBALGAP, MPS and FAIR TRADE certificates giving Sri Lanka a sustainable competitive edge in contemporary times.



STRENGTHS OF SRI LANKA'S FLORICULTURE SECTOR

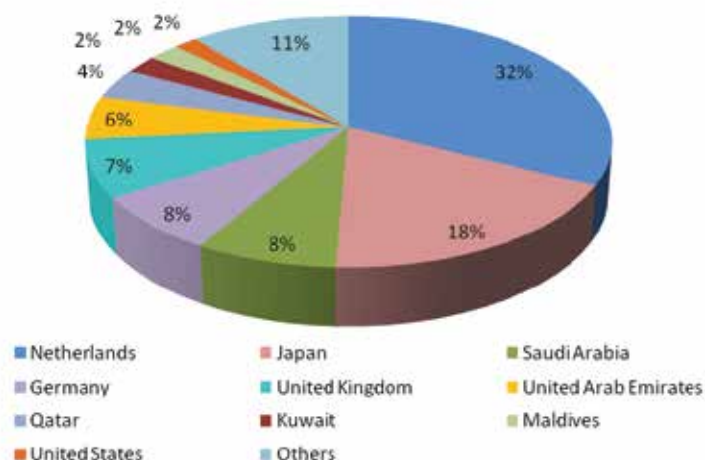
- Diverse climatic conditions within the country enabling to cultivate a wide range of products from tropical to temperate.
- Year-round production
- Reputation built up as a supplier of quality products.
- Same day light hours during whole year (positive effect on consistency of quantity & quality)
- Availability of cultivation technology to finish products according to International standards.
- Availability of natural growing medium eg:- Coco peat
- Flexible operation (out-grower schemes, short-term employment)
- Low impact on environment
- Skilled and experienced labour
- Adherence to the international standards such as GLOBALGAP, Fair Trade, MPS Certifications

PRODUCT ASSORTMENT OF SRI LANKA

Sri Lankan product assortment consists of the following product lines.

- Ornamental Foliage Plants
- Cut Decorative Foliage
- Cut Flowers
- Flower Seeds
- Aquarium Plants
- Landscaping Plants
- Tissue Cultured Plants

MARKETWISE DISTRIBUTION OF SRI LANKA'S FLORICULTURE PRODUCTS - 2013



ORNAMENTAL FOLIAGE PLANTS

Sri Lanka produces a wide range of young rooted cuttings of “non flowering” ornamental foliage plants. Unrooted cuttings and canes (semi finished plant material) are exported to be used as mother plants to grow indoor and outdoor in overseas nurseries. The assortment includes both local and imported varieties.



Dracaena sanderiana “white”



Dracaena sanderiana “victory”



Dracaena sanderiana “gold”



Livistonia rotundifolia



Ficus umbalata



Ficus umbalata



Dracaena sanderiana “cellus”



Polyscias balfouriana- bush



Polyscias balfouriana



Dracaena “purple compacta”



Polyscias filicifolia



Dracaena marginata “green”



Pleomele reflexa "Song of India"



Pleomele reflexa "Song of Jamaica"



Sansevieria



Codiaeum "banana"



Codiaeum "aucubifolia"



Codiaeum "sunnystar"



Codiaeum "iceton"



Codiaeum aucubifolia -bush



Codiaeum pictum-bush



Dracaena massengeana



Dracaena massengeana



Cordyline "glauca"



Gardenia green



Chlorophytum



Aglaonema "silver queen"



Dracaena marginata "magenta"



Areca catechu



Aglaonema "maria"



Scindapsus "marble queen"



Scindapsus "aureus"



Rhoeo



Excocaria variegated



Schefflera "green"



Schefflera "trinette"



Dracaena godseffiana (florida beauty)



Zamioculcus zamifolia



Philodendran



Polyscias "crispum" "-heart bush



Polyscias "gulifolia"



Polyscias "crispum" - bush

TISSUE CULTURED PLANTS

Several government /private sector institutions of Sri Lanka are equipped with modern laboratories capable of producing a wide range of quality tissue cultured plants for both domestic and overseas markets. Research & Development in this industry continues on innovative techniques and optimization of requirements.



AQUARIUM PLANTS

The tropical aquarium plants used in aquariums are cultivated under strict supervision of trained and experienced nurserymen. These plants are carefully cultivated in submerged conditions to suit large scale commercial production and are exported mainly to Europe, Middle East and South Africa.



LANDSCAPING PLANTS

Hardy plants / bushes with a height of more than 3 feet are exported mainly to Middle East and Maldives for land scaping purposes.



CUT DECORATIVE FOLIAGE

Tropical cut greenery is used worldwide for decorative purposes . Exporters are able to supply a rich variety of temperate and tropical types of cut greenery and are therefore fully geared to meet export orders throughout the year regardless of seasonality.



Dracaena purple compacta



Aglaonema "maria"



Dracaena marginata
"tricolor"



Dracaena godseffiana
(florida beauty)



Caryota urenus



Dracaena sanderiana
"white"



Dracaena sanderiana
"gold"



Dracaena sanderiana
"victory"



Phillo "lime"



Scindapsus "aureus"



Codiaeum



Codiaeum



Anthurium



Codiaeum



Calathea makoyana



Cordyline terminalis



Cordyline "green"



Dracaena massengeana



Cane palm



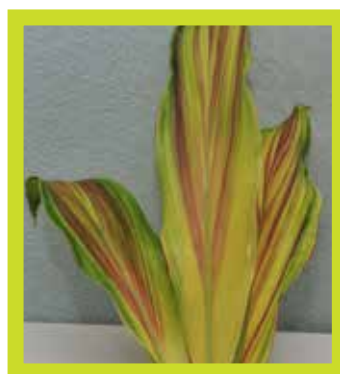
Areca catechu



Thaloidae



Raphis



Cordyline "tricolor"



Chinese grass

FLOWER SEEDS

High quality seeds of the Petunia, Dianthus, Marigold, Antirrhinum, Begonia, Torania, Platycoden, Gerbera etc are produced using skilled labour and close supervision for export.



CUT FLOWERS

Sri Lanka's climate facilitates production of both temperate and tropical flower types. Main exportable temperate flowers from Sri Lanka includes Roses, Carnations, Chrysanthemum, Gerberas, Gypsophila, Alstomeria, Limonium etc.

Tropical flowers contain exotic species such as Anthuriums, Orchids, Heliconias and Ginger etc; high quality imported hybrid mother plants are also used in the production of cut flowers.



ANTHURIUM VARIETIES - POTTED PLANTS



Royal Highness Princess Maha Chakri Sirindhorn



Pabalu



Lanka



Pearl



RBG Splendor



Royal Flag



Royal Rush

ORNAMENTAL PLANT VARIETY



"Chirita Royal Queen"

ANTHURIUM VARIETIES - CUT FLOWERS



RBG RED



RBG White



Lak Tharu



Muthu



Kandy



Maithree



Sunset



Kamala

ORCHID VARIETIES



Cattleya Her Imperial
Highness Princess Suguko of
Takamado



Phalaenopsis Chandrika
Bandaranaike
Kumaratunge



Dendrobium Roshanie



Dendrobium Royal White



Dendrobium Princess
Michiko



Dendrobium Royal Splash

Floriculture



For Further Inquiries

SRI LANKA EXPORT DEVELOPMENT BOARD

NDB-EDB Tower,
No 42, Nawam Mawatha,
Colombo 02, Sri Lanka.
Tele: 0094 11 2300705-11
Fax:0094 11 2300715
Email: ead@edb.gov.lk
www.srilankabusiness.com