



PORT CITY
COLOMBO

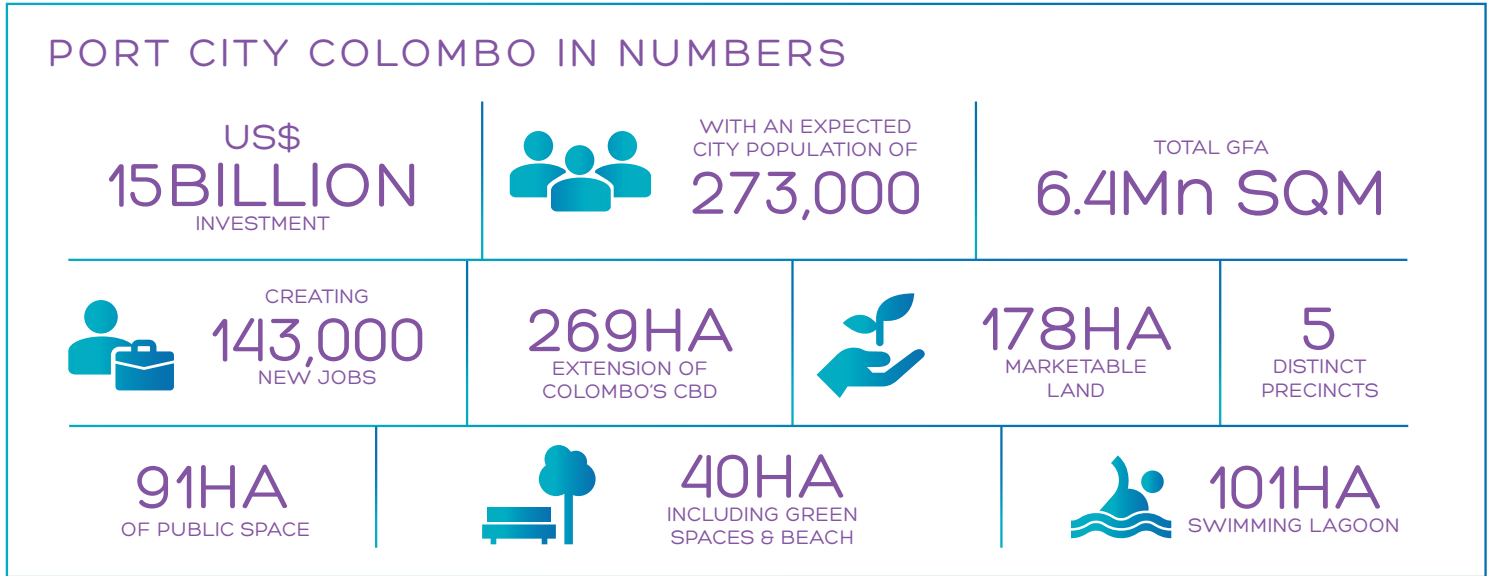
MASTERPLAN

PORT CITY COLOMBO

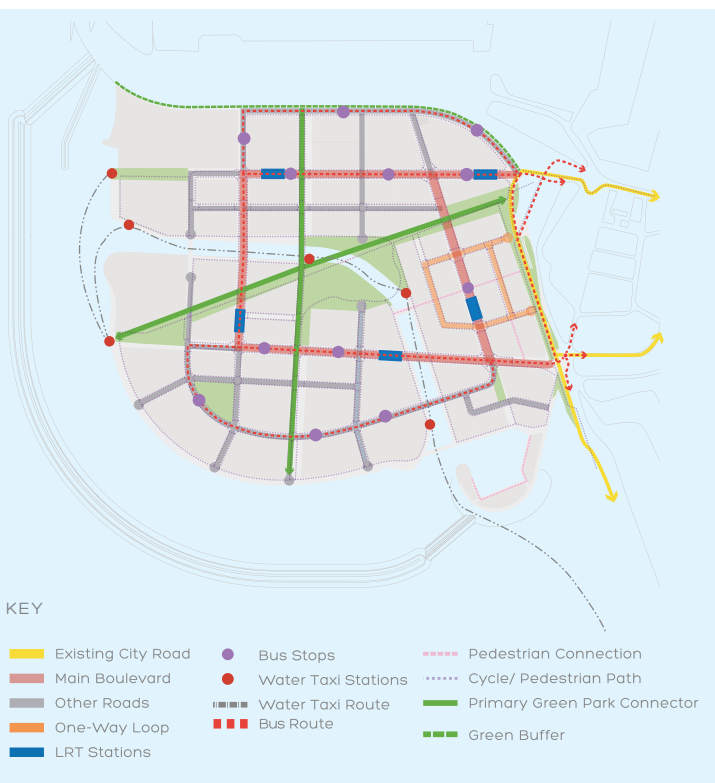
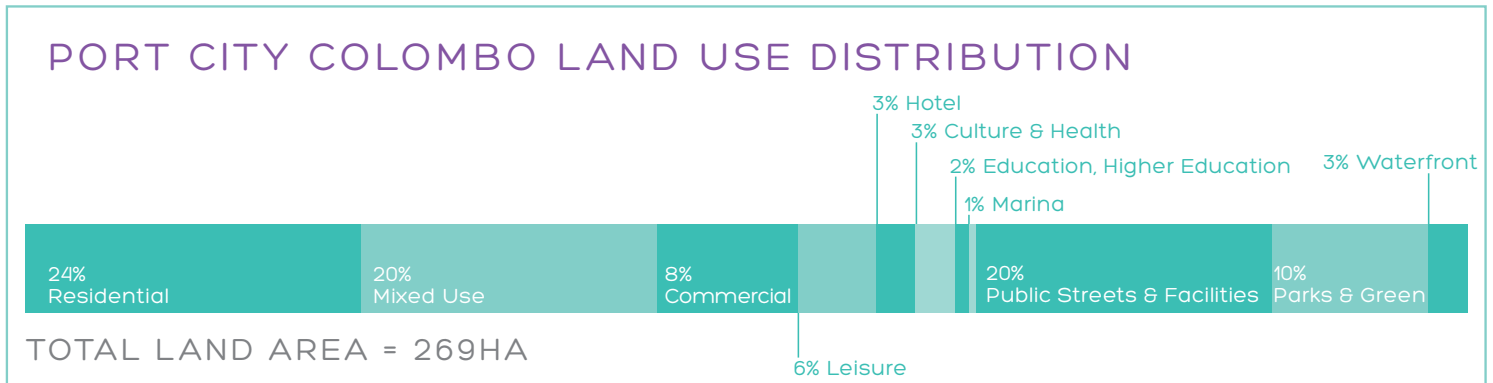
THE FUTURE OF BUSINESS AND SUSTAINABLE LIVING

Port City Colombo is a master planned city that is being built with modern sustainable city designs and smart city concepts. The city is positioned as the region's modern services hub and financial center of the future, providing the highest quality in commercial, lifestyle, and living opportunities.

PORT CITY COLOMBO IN NUMBERS



PORT CITY COLOMBO LAND USE DISTRIBUTION



SUSTAINABILITY

Emphasizing Sustainability From The Onset

- Successful completion of comprehensive pre-reclamation EIAs
- Sustainable principles for infrastructure and vertical developments
- Protecting vital ecosystems
- Adhering to Environmental Management Plans

Encouraging Overall Sustainability

- Prioritizing green spaces and sustainability
- Development Control Regulations promote sustainable practices
- GFA Incentives for landscaping improvements and meeting green building standards
- Encouraging sustainable construction standards

A Master Planned Green City

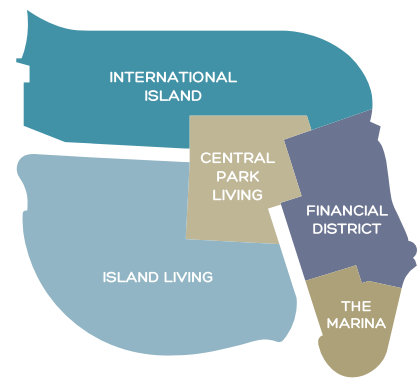
- Masterplan emphasizes the importance of sustainability
- Sustainable infrastructure and vast open green spaces
- Sustainable designs and eco-friendly developments
- Promoting energy efficient buildings

Master Transport Strategy

- Shaded walkways and green canopies
- Promotes non-motorized transport such as walking and cycling
- Provision for an integrated LRT system

DISTINCT PRECINCT PERSONALITIES

Port City Colombo has been designed with five unique precincts, each offering a fine urban grain tailored for its planned use. Together they provide an exemplar city that equals any global metropolis.



FINANCIAL DISTRICT

Business and pleasure come together in a world class commercial district.

- High Density
- Grade-A Office Buildings
- Commercial Boulevard
- Linear Park
- CBD Plaza
- Retail Destination



INTERNATIONAL ISLAND

Enjoy a wide variety of options for business and leisure.

- Medium Density
- Integrated Resort
- Convention & Exhibition Centre
- International University
- International School
- Healthcare Facility
- Entertainment Hub



ISLAND LIVING

Every day is a staycation with the sand and sea at your doorstep.

- Medium Density
- City Beach
- Villa Living
- Harbor Quay Park
- Cinnamon Park
- Lotus Boulevard
- Golf Course



CENTRAL PARK LIVING

Enjoy nature in the heart of the city. Cycle, run, stroll and picnic in a lush oasis.

- Medium High Density
- The Channel
- Central Park
- Pavilions
- Green Heart
- Open Blocks



THE MARINA

Promenade among yachts and dine alfresco in the serenity of The Marina.

- Low Density
- Marina Promontory
- Marina Park
- Luxury Residences
- Entertainment & Luxury Retail

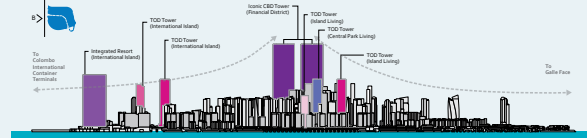
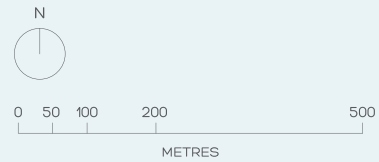
PORT CITY COLOMBO THE MASTERPLAN

LAND USE

- COMMERCIAL
- TRANSIT ORIENTED DEVELOPMENT
- MIXED USE
- RESIDENTIAL
- HOSPITALITY
- LEISURE & ENTERTAINMENT
- CULTURAL / HEALTHCARE
- EDUCATION/ HIGHER EDUCATION
- MARINA COMMERCIAL / FACILITIES
- OPEN SPACES (WATER FRONT)
- OPEN SPACES (PARKS & SQUARES)
- RECREATIONAL SPORTS FACILITY
- OPEN SPACES (BEACH)
- PUBLIC UTILITY
- PUBLIC FACILITY
- PUBLIC STREETS
- PROPOSED LRT
- PROPOSED LRT STATION

PLOT SPECIFICATION

- FLOOR AREA RATIO
- MAXIMUM HEIGHT



COLOMBO INTERNATIONAL CONTAINER TERMINALS



REGULATORY AUTHORITY
Colombo Port City Economic Commission

PRIMARY DEVELOPER
CHEC Port City Colombo (Pvt) Ltd

KEY CONSULTANTS



HONOURS & AWARDS





LEVEL 30, ONE GALLE FACE TOWER, NO 1 A, CENTRE ROAD, GALLE FACE, COLOMBO 02, SRI LANKA
TEL: +94 11 233 5141 | EMAIL: ENQUIRY_CPCC@CHEC.LK | PORTCITYCOLOMBO.LK

The information in this document is indicative and intended to act as a guide only as to the finished product. All photographs, images, drawings and sketches contained herein represent artist's impression of the development only. All information contained herein shall be subject to the final plans approved by the relevant Government authorities and legal documentation. Due to the developer's policy of continuous improvement, the developer reserves the right to modify any parts of the scheme prior to completion and the finished product, schedules, timeframes, layout information and specifications outlined in this brochure are subject to change and may vary from the information provided. While every reasonable care has been taken in preparing this brochure, neither the Land Owner nor the Developer nor the Agent nor any of their officers, employees, consultants or representatives shall be held responsible for any inaccuracies in its content. It should be noted that this brochure or any part of its contents is not intended to form part of any offer or contract or to be a guarantee or warranty of any manner whatsoever.